

# CAPITAL IMPROVEMENT PROGRAM

FY 2025-26 THROUGH FY 2029-30



**CITY OF WILDOMAR**  
**ADOPTED: JUNE 11, 2025**

23873 CLINTON KEITH RD., SUITE 110, WILDOMAR, CA 92595  
951-677-7751 | [www.wildomar.gov](http://www.wildomar.gov)



# CAPITAL IMPROVEMENT PROGRAM

FY 2025-26 through FY 2029-30



Ashlee DePhillippo, Mayor, Dist. 5

Carlos Marquez, Mayor Pro Tem, Dist. 1

Bridgette Moore, Council Member, Dist. 4

Joseph Morabito, Council Member, Dist. 3

Dustin Nigg, Council Member, Dist. 2

Chris Mann

*Interim City Manager*

Plan Prepared By:

City of Wildomar

Public Works/Engineering Department

23873 Clinton Keith Rd., Suite 110

Wildomar, CA 92595

## TABLE OF CONTENTS

Introduction and Summary .....	1
Program Funding.....	2
Program Summary .....	4
Projects Completed to Date .....	7
Program Project Detail Sheets .....	10
Future Projects Not Yet Budgeted or Scheduled .....	10
<b>Appendix A Program Project Detail Sheets .....</b>	<b>18</b>
<b>Appendix B Future Projects Not Yet Budgeted or Scheduled .....</b>	<b>64</b>

## SUMMARY OF TABLES

Table 1 - Program Funding for FY 2025-26 and 2026-27.....	2
Table 2 - FY 2025-26 and 2026-27 Budget by Project Category.....	3
Table 3 - Transportation (Roads) Projects Category Summary .....	4
Table 4 - Transportation (Signals) Projects Category Summary .....	4
Table 5 - Transportation (Maintenance) Project Category Summary.....	5
Table 6 - Drainage Projects Category Summary .....	5
Table 7 - Trail Projects Category Summary .....	5
Table 8 - Park Projects Category Summary .....	5
Table 9 - Building Projects Category Summary .....	6
Table 10 - Cemetery Projects Category Summary.....	6
Table 11 - Other Projects Category Summary .....	6
Table 12 - Completed Project Summary.....	7
Table 13 - Modified Projects.....	8
Table 14 - Future DIF Projects (Streets).....	65
Table 15 - Future DIF Projects (Intersections).....	66
Table 16 - Future DIF Projects (Bridges) .....	67
Table 17 - Future DIF Projects (Traffic Signal Improvements) .....	67
Table 18 - Future DIF Projects (Drainage) .....	69
Table 19 - Future DIF Projects (Trails).....	70
Table 20 - Future DIF Projects (Police and Fire Department).....	71
Table 21 - Future DIF Projects (Parks).....	72
Table 22 - Future DIF Projects (Municipal Facilities).....	72

## INTRODUCTION AND SUMMARY

This document presents the City of Wildomar Capital Improvement Program (CIP) for Fiscal Years 2025-26 through 2029-30. The program proposes projects in nine project categories: Transportation - Roads, Transportation - Signals, Transportation - Maintenance, Drainage, Parks, Trails, Buildings, Cemetery, and Other. Project funding is provided by a variety of funding sources. A list of the funding sources for FY 2025-26 and 2026-27 is included in Table 1 below.

The CIP will be updated each year and presented to City Council for consideration. With the exception of Traffic Maintenance and Operations and Citywide Roadway Maintenance, the capital improvements listed in the CIP are the expenditures of public funds over and above the City's annual operating expenditures.

The multi-year CIP includes forecasts of anticipated capital improvement expenditures. The expenditures shown for Fiscal Year 2025-26 comprise the adopted Capital Budget for the remainder of the current budget cycle. Subsequent years are included but are subject to change due to additional analysis, changes in priorities, updates to available revenue, or changes in costs.

The CIP information is based on the best information available at the time. An updated five-year CIP will be submitted to the City Council for consideration each year with recommended adjustments.

Financial information included is based on 2025 dollars.

## PROGRAM FUNDING

Table 1 is a summary of the funding sources for the adopted 2025-26 fiscal year budget and the projected 2026-27 fiscal year budget.

**Table 1 - Program Funding for FY 2025-26 and 2026-27**

Fund Source	FY 25/26	FY 26/27
<b>100 - General Fund</b>	<b>\$ 141,200</b>	<b>\$ 31,200</b>
<b>115 - ARPA</b>	<b>\$ -</b>	<b>\$ -</b>
<b>120 - Measure AA</b>	<b>\$ 1,221,000</b>	<b>\$ 968,000</b>
<b>130 - Field Ops Center</b>	<b>\$ 75,000</b>	<b>\$ 575,000</b>
<b>200 - Gas Tax</b>	<b>\$ -</b>	<b>\$ -</b>
<b>201 - Measure A</b>	<b>\$ 2,206,700</b>	<b>\$ 1,312,260</b>
<b>203 - Transportation Development Act (TDA, SB 821)</b>	<b>\$ 942,000</b>	<b>\$ 381,325</b>
<b>203 - Air Quality Management District (AQMD)</b>	<b>\$ 137,500</b>	<b>\$ 152,500</b>
<b>205 - SLESF</b>	<b>\$ -</b>	<b>\$ -</b>
<b>206 - Community Development Block Grant (CDBG)</b>	<b>\$ 132,515</b>	<b>\$ -</b>
<b>207 - PEG Grant</b>	<b>\$ -</b>	<b>\$ -</b>
<b>300 - Cemetery</b>	<b>\$ -</b>	<b>\$ -</b>
<b>302 - Cemetery CIP</b>	<b>\$ 568,000</b>	<b>\$ -</b>
<b>410-490 - Development Impact Fees (DIF)</b>	<b>\$ 6,257,870</b>	<b>\$ 11,053,967</b>
<b>501 - Road Repair and Accountability Act (SB 1)</b>	<b>\$ 2,645,000</b>	<b>\$ 1,030,000</b>
<b>500 - Capital Reinvestment</b>	<b>\$ 87,000</b>	<b>\$ -</b>
<b>502 - Riverside County Flood Control (RCFC)</b>	<b>\$ -</b>	<b>\$ -</b>
<b>503 - Transportation Uniform Mitigation Fee (TUMF)</b>	<b>\$ 15,395,110</b>	<b>\$ 2,569,691</b>
<b>504 - Congestion Mitigation and Air Quality (CMAQ)</b>	<b>\$ -</b>	<b>\$ -</b>
<b>505 - Mobile Source Air Pollution Reduction Review Committee (MSRC)</b>	<b>\$ -</b>	<b>\$ -</b>
<b>506 - Highway Safety Improvement Program (HSIP)</b>	<b>\$ 997,020</b>	<b>\$ 446,290</b>
<b>507 - Misc. State Funds</b>	<b>\$ 1,219,800</b>	<b>\$ 3,271,700</b>
<b>508 - Local Capital Grants (SCAG, Misc.)</b>	<b>\$ 12,838,640</b>	<b>\$ 6,110,941</b>
<b>509 - Federal Grants</b>	<b>\$ 225,000</b>	<b>\$ 50,000</b>
<b>510 - Bond Proceeds</b>	<b>\$ 1,540,000</b>	<b>\$ 50,000</b>
<b>601 - Landscape and Lighting Maintenance District (LLMD)</b>	<b>\$ 592,549</b>	<b>\$ -</b>
<b>603 - County Service Area (CSA) 103</b>	<b>\$ 11,708</b>	<b>\$ -</b>
<b>604 - County Service Area (CSA) 142</b>	<b>\$ -</b>	<b>\$ -</b>
<b>606 - Community Facilities District (CFD)</b>	<b>\$ 35,123</b>	<b>\$ -</b>
<b>690 - Measure Z</b>	<b>\$ -</b>	<b>\$ -</b>
<b>Unfunded/Developer/Cash-in-Lieu/Other</b>	<b>\$ 1,626,485</b>	<b>\$ 13,613,946</b>
<b>Total</b>	<b>\$ 48,895,220</b>	<b>\$ 41,616,820</b>

A summary of the project funding by project category for the adopted 2025-26 fiscal year budget and the projected 2026-27 fiscal year budget is provided in Table 2.

**Table 2 - FY 2025-26 and 2026-27 Budget by Project Category**

<b>Project Category</b>	<b>FY 25/26</b>	<b>FY 26/27</b>	<b>Two-Year Budget</b>
<b>Buildings</b>	\$ 260,000	\$ 575,000	\$ 835,000
<b>Cemetery</b>	\$ 568,000	\$ -	\$ 568,000
<b>Drainage</b>	\$ 1,529,380	\$ 325,000	\$ 1,854,380
<b>Other</b>	\$ 2,692,170	\$ 235,000	\$ 2,927,170
<b>Parks</b>	\$ 3,384,000	\$ 7,677,320	\$ 11,061,320
<b>Trails</b>	\$ 265,000	\$ 835,000	\$ 1,100,000
<b>Trans. (Maint.)</b>	\$ 4,122,900	\$ 2,467,900	\$ 6,590,800
<b>Trans. (Roads)</b>	\$ 34,458,770	\$ 28,920,500	\$ 63,379,270
<b>Trans. (Signals)</b>	\$ 1,615,000	\$ 581,100	\$ 2,196,100
<b>Total</b>	\$ 48,895,220	\$ 41,616,820	\$ 90,512,040

## PROGRAM SUMMARY

A summary of proposed projects by category for the entire 5-Year Capital Improvement Program is included in Table 3 through Table 11.

**Table 3 - Transportation (Roads) Projects Category Summary**

Project No.	Project Title	Project Category
<b>025-1</b>	Clinton Keith Rd. Widening (Phase 1)	Trans. (Roads)
<b>026-2</b>	Bundy Canyon Rd. Improvement Project (Segment 2)	Trans. (Roads)
<b>026-3</b>	Bundy Canyon Rd. Improvement Project (Segment 3)	Trans. (Roads)
<b>028-2</b>	Palomar St. Widening Project (Phase 2)	Trans. (Roads)
<b>028-3</b>	Palomar St. Widening Project (Phase 3)	Trans. (Roads)
<b>044-3</b>	Mission Trail/Sedco Sidewalk (CDBG) (Phase 3)	Trans. (Roads)
<b>051-2</b>	Local Road Safety Plan (LRSP) Implementation	Trans. (Roads)
<b>066</b>	Right-of-Way Enhancement Program	Trans. (Roads)
<b>070</b>	Bundy Canyon Rd./I-15 Interchange	Trans. (Roads)
<b>074</b>	Wildomar Trail/I-15 Interchange	Trans. (Roads)
<b>081</b>	Grand Ave./Sheila Ln. Roundabout	Trans. (Roads)
<b>087</b>	Lost Rd. Improvements	Trans. (Roads)
<b>090</b>	Bundy Canyon Rd. West - Widening & ATP Improvements	Trans. (Roads)
<b>096</b>	Sedco Boulevard Roadway Safety Improvements Project	Trans. (Roads)
<b>103</b>	Wildomar Trail Interchange Restriping	Trans. (Roads)
<b>105</b>	Install Edgelines (Citywide)	Trans. (Roads)
<b>106</b>	Geometric Alignment Studies	Trans. (Roads)

**Table 4 - Transportation (Signals) Projects Category Summary**

Project No.	Project Title	Project Category
<b>088</b>	Harvest Way East/Bundy Canyon Rd. Traffic Signal	Trans. (Signals)
<b>089</b>	Traffic Signal Retrofits and Upgrades	Trans. (Signals)
<b>097-1</b>	Pedestrian Crosswalk Enhancement Project	Trans. (Signals)
<b>097-2</b>	Pedestrian Crosswalk Enhancement Project	Trans. (Signals)

**Table 5 - Transportation (Maintenance) Project Category Summary**

<b>Project No.</b>	<b>Project Title</b>	<b>Project Category</b>
<b>050-1</b>	Pavement Management Program	Trans. (Maint.)
<b>057</b>	Pavement Rehabilitation Program	Trans. (Maint.)
<b>058</b>	Annual Slurry Seal Program	Trans. (Maint.)
<b>108</b>	Traffic Maintenance and Operations	Trans. (Maint.)
<b>109</b>	Roadway Maintenance Program	Trans. (Maint.)

**Table 6 - Drainage Projects Category Summary**

<b>Project No.</b>	<b>Project Title</b>	<b>Project Category</b>
<b>023-1</b>	Master Drainage Plan (MDP) Update	Drainage
<b>063</b>	Lateral C Basin and Storm Drain	Drainage
<b>069</b>	Miscellaneous Drainage Improvements	Drainage
<b>086</b>	Sedco MDP Line F-2 Storm Drain	Drainage
<b>091</b>	Catch Basin Filter Retrofit Project	Drainage
<b>094</b>	RCFC Line G Storm Drain (Stages 1 and 2)	Drainage
<b>095</b>	RCFC Murrieta Creek/Wildomar Channel ROW Impvts.	Drainage
<b>107</b>	Sedco MDP Lines A & B	Drainage

**Table 7 - Trail Projects Category Summary**

<b>Project No.</b>	<b>Project Title</b>	<b>Project Category</b>
<b>043</b>	Wildomar Channel Trail Access	Trails
<b>082</b>	Palomar St./Bryant St. Trail	Trails
<b>092</b>	Bundy Canyon Rd. Sidewalk and Bike Lanes	Trails

**Table 8 - Park Projects Category Summary**

<b>Project No.</b>	<b>Project Title</b>	<b>Project Category</b>
<b>061</b>	Regency-Heritage Park Rehabilitation	Parks
<b>062-1</b>	27-Acre Park: Phase 1	Parks
<b>062-2</b>	27-Acre Park: Phase 2	Parks
<b>068</b>	New 11 Acre Park	Parks
<b>099</b>	20-Acre Passive Park	Parks
<b>102</b>	Marna O'Brien Park Rubberized Play Surface	Parks

**Table 9 - Building Projects Category Summary**

<b>Project No.</b>	<b>Project Title</b>	<b>Project Category</b>
<b>080</b>	Fire Station 61 Site Improvements	Buildings
<b>093</b>	Wildomar Fire Station #2 (East of I-15)	Buildings
<b>098</b>	Interim Field Operations Center	Buildings
<b>101</b>	City Hall Renovations	Buildings

**Table 10 - Cemetery Projects Category Summary**

<b>Project No.</b>	<b>Project Title</b>	<b>Project Category</b>
<b>067-1</b>	Phase 1 Cemetery Improvements	Cemetery
<b>067-2</b>	Cemetery Master Plan Update	Cemetery

**Table 11 - Other Projects Category Summary**

<b>Project No.</b>	<b>Project Title</b>	<b>Project Category</b>
<b>Admin</b>	Capital Improvement Program Administration	Other
<b>073-1</b>	TR 31667 DIF Credit/Reimbursement	Other
<b>100</b>	Landscape Maintenance District Enhancements	Other
<b>104</b>	Engineering Standards and Guidelines	Other

## PROJECTS COMPLETED TO DATE

A summary of projects that were included in previous editions (FY 19-20 edition and later) of the 5-Year CIP Program but have since been completed is included in Table 12.

**Table 12 - Completed Project Summary**

Project No.	Project Title	Project Category	Completion Year
<b>023-2</b>	Development Impact Fee Update	Trans. (Roads)	FY 21/22
<b>026-1</b>	Bundy Canyon Rd. Improvement Project (Segment 1)	Trans. (Roads)	FY 23/24
<b>028-1</b>	Palomar St. Widening Project (Phase 1, Environmental)	Trans. (Roads)	FY 21/22
<b>039</b>	Line F Storm Drain (Bundy Canyon Rd.)	Drainage	FY 22/23
<b>041</b>	Pedestrian Countdown Head and Crosswalk Enhancement Project	Trans. (Signals)	FY 20/21
<b>042</b>	Guardrail Repair and Upgrades Project	Trans. (Maint.)	FY 20/21
<b>044-2</b>	Mission Trail/Sedco Sidewalk (CDBG) (Phase 2)	Trans. (Roads)	FY 19/20
<b>051</b>	Systematic Safety Analysis Report	Trans. (Roads)	FY 20/21
<b>051-1</b>	Local Road Safety Plan (LRSP)	Trans. (Roads)	FY 22/23
<b>052</b>	Wildomar Trail Signage	Trans. (Roads)	FY 19/20
<b>054</b>	Wildomar Mobility Plan (Circulation Element Update and Active Transportation Plan)	Trans. (Roads)	FY 20/21
<b>055</b>	City Hall Tenant Improvements <i>Note: No local funds expended. COVID relief funds utilized to implement new public lobby.</i>	Buildings	FY 20/21
<b>056</b>	Quality Assurance Plan Update	Trans. (Roads)	FY 19/20
<b>059</b>	Palomar/Clinton Keith Sidewalk, Trail, Bike Lane Connectivity Project	Trails	FY 22/23
<b>067</b>	Cemetery Master Plan	Cemetery	FY 20/21
<b>053</b>	Park Shade Structures	Parks	FY 19/20
<b>057-0</b>	Pavement Rehabilitation Program	Trans. (Maint.)	FY 20/21
<b>057-1</b>	Pavement Rehabilitation Program	Trans. (Maint.)	FY 21/22
<b>057-2</b>	Pavement Rehabilitation Program	Trans. (Maint.)	FY 23/24
<b>058-0</b>	Annual Slurry Seal Program	Trans. (Maint.)	FY 21/22
<b>058-2</b>	Annual Slurry Seal Program	Trans. (Maint.)	FY 23/24
<b>077</b>	Bundy Canyon Rd./Sellers Rd. Traffic Signal	Trans. (Signals)	FY 22/23
<b>078</b>	Bundy Canyon Rd./Monte Vista Dr. Traffic Signal	Trans. (Signals)	FY 22/23

In addition to completed projects, some projects have been re-scoped to better coincide with other projects in the 5-Year CIP Program. A summary of these changes is included below to help maintain a history of the project numbers that are no longer in use.

Table 13 - Modified Projects

Project No.	Project Title	Project Status	Details	New Project Reference	Deletion Year
<b>025-2</b>	Clinton Keith Rd. Widening (Phase 2)	Merged	Merged scope with CIP 025-1. A future Phase 2 project is no longer anticipated as the scope of CIP 025-1 has been modified to include ultimate widening. If needed, this project number may be reused in the future.	025-1	FY 22/23
<b>051-2</b>	Local Road Safety Plan (LRSP) Implementation	Merged	Ongoing LRSP implementation has been conducted as part of the City's routine traffic maintenance and operations. Therefore, this project is being merged into CIP 108 – Traffic Maintenance and Operations. Some LRSP implementation recommendations may also be incorporated into specific CIP projects depending on the scope and cost of the improvement(s).	108	FY 24/25
<b>060</b>	Lemon St. Drainage Improvements	Merged	Paving complete with CIP 057-1. Drainage improvements to be complete with CIP 086.	086	FY 21/22
<b>064</b>	Line C Storm Drain	Merged	Project combined with Lateral C Basin	063	FY 21/22
<b>065</b>	Bundy Canyon Rd./Almond St. Safety Lighting Study	Deleted	Intersection meets signal warrants. Project upgraded to a new signal project.	076	FY 21/22
<b>071</b>	Bundy Canyon Rd./Oak Circle Dr. Traffic Signal	Merged	Project has been budgeted and will be constructed with CIP 026-2.	026-2	FY 22/23
<b>072</b>	Bundy Canyon Rd./The Farm Rd. Traffic Signal Modification	Merged	Project has been budgeted and will be constructed with CIP 026-2.	026-2	FY 22/23

<b>073</b>	Wildomar Channel/McVicar St. Crossing	Deleted	Project replaced with CIP 073-1, which includes additional improvements to be completed by the private developer.	073-1	FY 23/24
<b>075</b>	Bundy Canyon Rd./Orchard St. Traffic Signal	Merged	Project has been budgeted and will be constructed with CIP 090.	090	FY 24/25
<b>076</b>	Bundy Canyon Rd./Almond St. Traffic Signal	Merged	Project has been budgeted and will be constructed with CIP 090.	090	FY 24/25
<b>079</b>	Monte Vista Dr. Street Improvements	Deleted	Improvements will be constructed by a private developer conditioned for the improvements.	N/A	FY 22/23
<b>083</b>	Caltrans I-15 Stormwater Mitigation (EA 1C570, 1E340)	Deleted	These projects are Caltrans projects, with City CIPs created to track staff coordination efforts with Caltrans. Level of required staff involvement has been minimal and remaining work will be completed under General Public Works budgets.	N/A	FY 22/23
<b>084</b>	Caltrans I-15 Roadway Safety Improvements (EA 1G890)	Deleted		N/A	FY 22/23
<b>085</b>	Caltrans I-15 ADA Improvements (EA 1J670)	Deleted		N/A	FY 22/23

## PROGRAM PROJECT DETAIL SHEETS

For each proposed project in the 5-Year Program, a Project Detail Sheet has been prepared that presents the various project details including:

- **Project Title and Location**
- **Project/CIP No., Department, Category, and Project Manager**
- **Project Initiation Year**
- **Description of Project**
- **Project Location and/or Exhibit**
- **Project Budget and Funding Source(s) by Phase and Year**

The **Project Budget** section of the **Project Detail Sheet** includes the following columns of data:

- **Total Project Cost Estimate**
  - *This is the estimate of the total project cost for a given phase for the upcoming 5-Years.*
- **Proposed Budget (for the remainder of the current two-year budget)**
  - *This column represents the appropriations for the project for the upcoming fiscal-year/the remainder of the current two-year budget.*
- **Projected Budget (for the remaining years of the project)**
  - *These four columns represent the projected expenditures for the project for the remaining years of the project. Expenditures in the final column may represent projected expenditures in Year 5 of the 5-Year Program or may represent project expenditures beyond Year 5.*
- **Note: The sum of the Proposed Budget and the Projected Budget is the Total Project Cost Estimate.**

Project Detail Sheets are included in Appendix A.

## FUTURE PROJECTS NOT YET BUDGETED OR SCHEDULED

The City's Development Impact Fee Study identifies ultimate improvements needed Citywide. On December 15, 2021, the City Council adopted an updated DIF Study (dated December 2, 2021). Projects from that study that remain without budget and without schedule or are on-going but not yet complete/accepted, are included in the CIP and are listed in Appendix B. Projects from that study that have been completed are denoted with "Complete" in Appendix B.

# APPENDIX A

## PROGRAM PROJECT DETAIL SHEETS

(appendix continues on next page)

**CITY OF WILDOMAR**  
**CAPITAL IMPROVEMENT PROGRAM PROJECT DETAIL SHEET**  
 FY 25/26 to FY 29/30

**PROJECT SUMMARY**

<b>PROJECT TITLE:</b>	Capital Improvement Program Administration	<b>CIP NO.:</b>	Admin	<b>DEPT:</b>	Public Works
<b>LOCATION:</b>	Citywide	<b>CATEGORY:</b>	Other	<b>MANAGER:</b>	Jason Farag
<b>INITIATED:</b>	FY 19/20				

**PROJECT DESCRIPTION AND EXHIBIT**

Administration and management of the CIP includes such tasks as preparation of project schedules, preparation and evaluation of project and program budgets, preparation of reports, updates to standards and specifications, engineering analyses of existing conditions and potential improvements to City infrastructure, evaluation of and planning for potential new projects, preparation of grant applications for project funding, program management tasks, and other associates expenses. Where these activities are not specific to any previously budgeted project, expenses are covered by CIP Administration.



PROJECT PHASE/TASK	TOTAL 5- YEAR PROJECT				PROPOSED BUDGET		PROJECTED BUDGET		
					FY 25/26	FY 26/27	FY 27/28	FY 28/29	FY 29/30 & Future Years
Project Dev/Environ.	\$ 300,000				\$ 75,000	\$ 75,000	\$ 50,000	\$ 50,000	\$ 50,000
Design/PS&E	-				-	-	-	-	-
Right-of-Way	-				-	-	-	-	-
Construction	-				-	-	-	-	-
Const Admin/Inspect.	-				-	-	-	-	-
<b>Total Cost:</b>	<b>\$ 300,000</b>				<b>\$ 75,000</b>	<b>\$ 75,000</b>	<b>\$ 50,000</b>	<b>\$ 50,000</b>	<b>\$ 50,000</b>
<b>FUNDING SOURCES</b>									
201 - Measure A	\$ 300,000				\$ 75,000	\$ 75,000	\$ 50,000	\$ 50,000	\$ 50,000
	-				-	-	-	-	-
	-				-	-	-	-	-
	-				-	-	-	-	-
	-				-	-	-	-	-

**CITY OF WILDOMAR**  
**CAPITAL IMPROVEMENT PROGRAM PROJECT DETAIL SHEET**  
FY 25/26 to FY 29/30

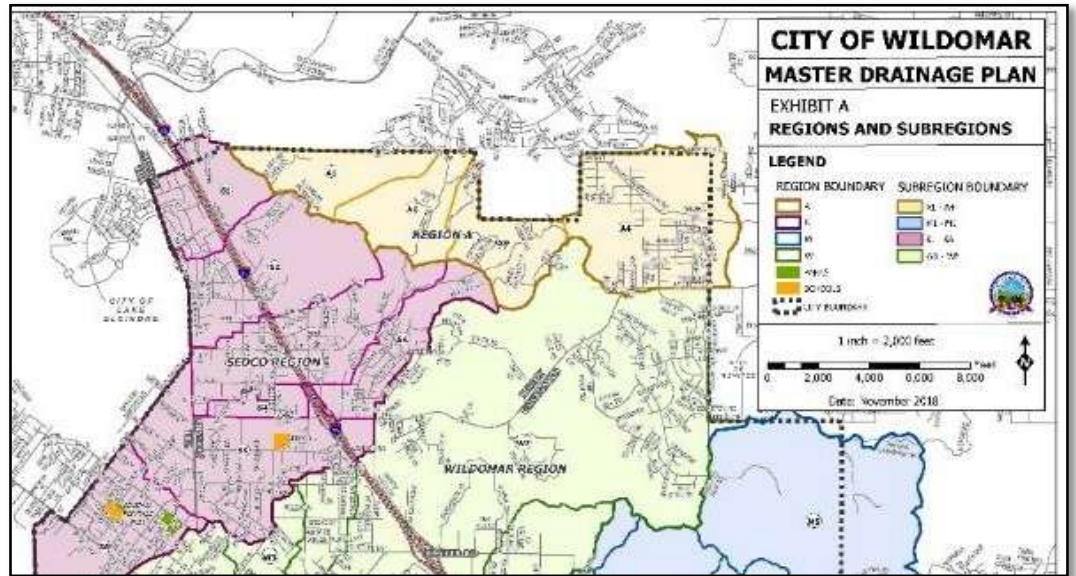
**PROJECT SUMMARY**

<b>PROJECT TITLE:</b>	Master Drainage Plan (MDP) Update	<b>CIP NO.:</b>	023-1	<b>DEPT:</b>	Public Works
<b>LOCATION:</b>	Citywide	<b>CATEGORY:</b>	Drainage	<b>MANAGER:</b>	Unassigned
<b>INITIATED:</b>	FY 21/22				

**PROJECT DESCRIPTION AND EXHIBIT**

The Wildomar Master Drainage Plan was adopted in December 2019. To ensure that the document remains current and is easily accessible for future review and modification, this project will:

1. Update proposed and existing facilities, based on current information.
2. Organize technical data for retention and use.
3. Organize hardcopy and digital files.



PROJECT PHASE/TASK	TOTAL 5- YEAR PROJECT				PROPOSED BUDGET		PROJECTED BUDGET		
					FY 25/26	FY 26/27	FY 27/28	FY 28/29	FY 29/30 & Future Years
Project Dev/Environ.	\$ 50,000				\$ -	\$ 25,000	\$ 25,000	\$ -	\$ -
Design/PS&E	-				-	-	-	-	-
Right-of-Way	-				-	-	-	-	-
Construction	-				-	-	-	-	-
Const Admin/Inspect.	-				-	-	-	-	-
<b>Total Cost:</b>	<b>\$ 50,000</b>				<b>\$ -</b>	<b>\$ 25,000</b>	<b>\$ 25,000</b>	<b>\$ -</b>	<b>\$ -</b>
<b>FUNDING SOURCES</b>									
201 - Measure A	\$ 50,000				\$ -	\$ 25,000	\$ 25,000	\$ -	\$ -
	-				-	-	-	-	-
	-				-	-	-	-	-
	-				-	-	-	-	-
	-				-	-	-	-	-

**CITY OF WILDOMAR**  
**CAPITAL IMPROVEMENT PROGRAM PROJECT DETAIL SHEET**

FY 25/26 to FY 29/30

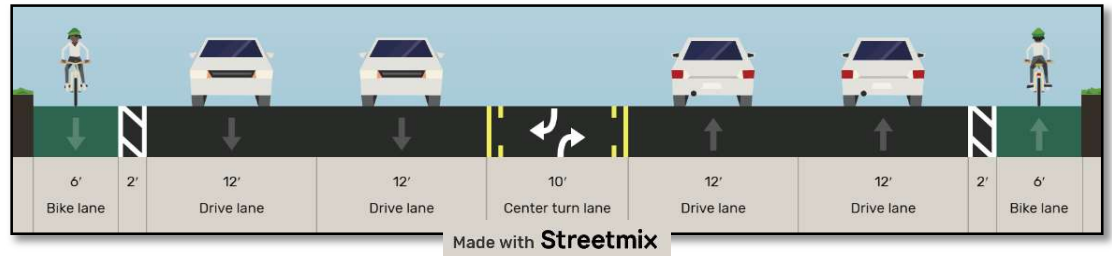
**PROJECT SUMMARY**

<b>PROJECT TITLE:</b>	Clinton Keith Rd. Widening	<b>CIP NO.:</b>	025-1	<b>DEPT:</b>	Public Works
<b>LOCATION:</b>	Clinton Keith Rd. (between I-15 and Copper Craft Rd.)	<b>CATEGORY:</b>	Trans. (Roads)	<b>MANAGER:</b>	Warren Repke
<b>INITIATED:</b>	FY 19/20				

**PROJECT DESCRIPTION AND EXHIBIT**

This project widens Clinton Keith Rd. to six lanes from the I-15 to Copper Craft Rd., and constructs Class II bike lanes in both directions throughout the entire project. The project is approximately 2 miles long.

Clinton Keith Rd. (CKR) is an Urban Arterial Road in the City Circulation Plan and is also a regional road that provides connectivity between the I-15 and I-215 freeways. Widening the road will improve the flow of traffic and will close an existing bike lane gap.



PROJECT PHASE/TASK	TOTAL 5-YEAR PROJECT				PROPOSED BUDGET		PROJECTED BUDGET		
					FY 25/26	FY 26/27	FY 27/28	FY 28/29	FY 29/30 & Future Years
Project Dev/Environ.	\$ -				\$ -	\$ -	\$ -	\$ -	\$ -
Design/PS&E	-				-	-	-	-	-
Right-of-Way	-				-	-	-	-	-
Construction	17,500,000				15,500,000	2,000,000	-	-	-
Const Admin/Inspect.	705,000				685,000	20,000	-	-	-
<b>Total Cost:</b>	<b>\$ 18,205,000</b>				<b>\$ 16,185,000</b>	<b>\$ 2,020,000</b>	<b>\$ -</b>	<b>\$ -</b>	<b>\$ -</b>
<b>FUNDING SOURCES</b>									
510 - Bond Proceeds	\$ 420,000				\$ 370,000	\$ 50,000	\$ -	\$ -	\$ -
503 - TUMF	10,543,860				9,218,860	1,325,000	-	-	-
501 - RMRA (SB1)	120,000				90,000	30,000	-	-	-
440 - DIF Roads	140,000				125,000	15,000	-	-	-
Dev. Cash-in-Lieu	725,000				725,000	-			
Unfunded	605,000				605,000	-			
508 - Local Grants	5,651,140				5,051,140	600,000	-	-	-

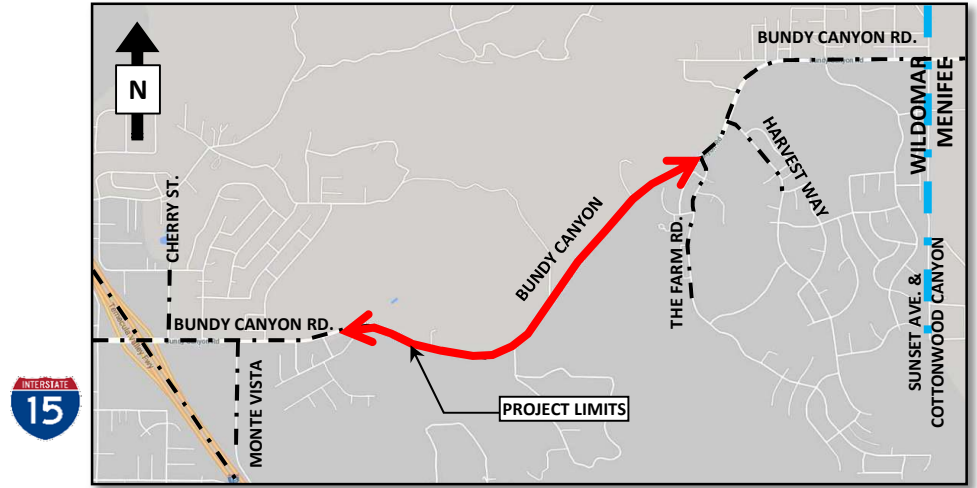
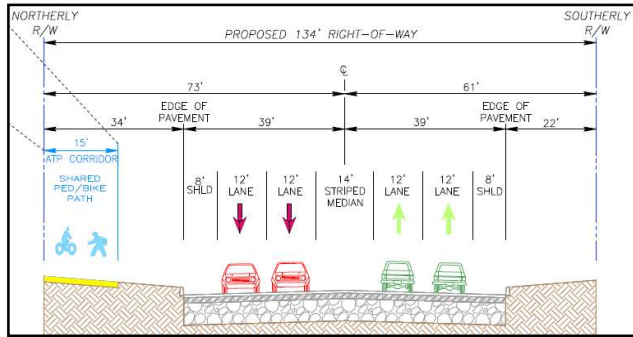
**CITY OF WILDOMAR**  
**CAPITAL IMPROVEMENT PROGRAM PROJECT DETAIL SHEET**  
FY 25/26 to FY 29/30

**PROJECT SUMMARY**

<b>PROJECT TITLE:</b>	<b>Bundy Canyon Rd. Improvement Project (Segment 2)</b>	<b>CIP NO.:</b>	026-2	<b>DEPT:</b>	Public Works
<b>LOCATION:</b>	Oak Circle Dr. to 600' East of The Farm Rd.	<b>CATEGORY:</b>	Trans. (Roads)	<b>MANAGER:</b>	Jason Farag
<b>INITIATED:</b>	FY 21/22				

**PROJECT DESCRIPTION AND EXHIBIT**

Widen Bundy Canyon Rd. from two lanes to four lanes with associated improvements, including traffic signals (former CIP 071-072) and an ATP Corridor (former CIP 026-3).



PROJECT PHASE/TASK	TOTAL 5-YEAR PROJECT	PROPOSED BUDGET			PROJECTED BUDGET			
		FY 25/26	FY 26/27		FY 27/28	FY 28/29	FY 29/30 & Future Years	
Project Dev/Environ.	\$ 450,000	\$ 450,000	\$ -		\$ -	\$ -	\$ -	
Design/PS&E	50,000	50,000	-		-	-	-	
Right-of-Way	2,815,000	2,815,000	-		-	-	-	
Construction	30,000,000	7,500,000	22,500,000		-	-	-	
Const Admin/Inspect.	1,150,000	287,500	862,500		-	-	-	
<b>Total Cost:</b>	<b>\$ 34,465,000</b>	<b>\$ 11,102,500</b>	<b>\$ 23,362,500</b>		<b>\$ -</b>	<b>\$ -</b>	<b>\$ -</b>	
<b>FUNDING SOURCES</b>								
480 - DIF Trails	\$ 1,699,962	\$ -	\$ 1,699,962		\$ -	\$ -	\$ -	
451 - DIF Drainage	423,120	-	423,120		-	-	-	
440 - DIF Roads	4,215,351	-	4,215,351		-	-	-	
450 - DIF Signals	524,000	-	524,000		-	-	-	
500 - Capital Reinvest	-	-	-		-	-	-	
507 - Misc. State Fund	1,454,000	-	1,454,000		-	-	-	
503 - TUMF	3,315,000	3,315,000	-		-	-	-	
Unfunded	9,535,126	-	9,535,126		-	-	-	
508 - Local Grants	13,298,441	7,787,500	5,510,941		-	-	-	

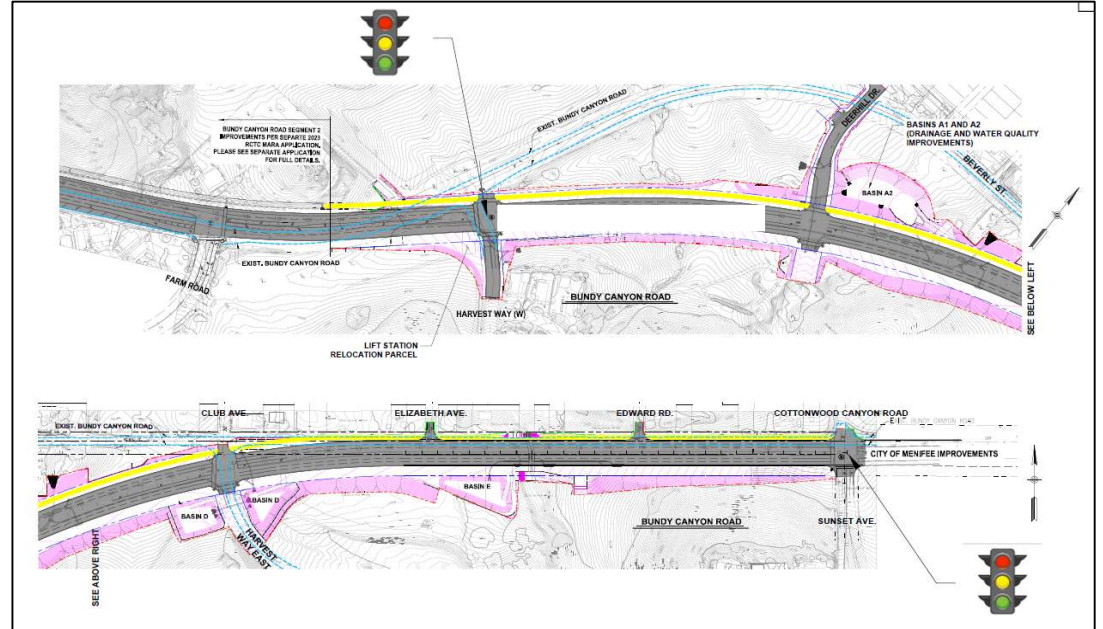
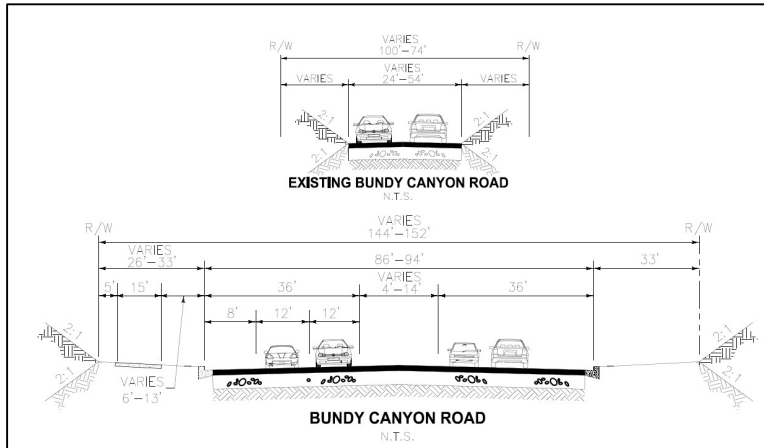
**CITY OF WILDOMAR**  
**CAPITAL IMPROVEMENT PROGRAM PROJECT DETAIL SHEET**  
FY 25/26 to FY 29/30

**PROJECT SUMMARY**

<b>PROJECT TITLE:</b>	<b>Bundy Canyon Rd. Improvement Project (Segment 3)</b>	<b>CIP NO.:</b>	026-3	<b>DEPT:</b>	Public Works
<b>LOCATION:</b>	The Farm Rd. to Sunset Ave./Cottonwood Canyon Rd.	<b>CATEGORY:</b>	Trans. (Roads)	<b>MANAGER:</b>	Jason Farag
<b>INITIATED:</b>	FY 22/23				

**PROJECT DESCRIPTION AND EXHIBIT**

Widen Bundy Canyon Rd. from two lanes to four lanes with associated improvements, including traffic signals and an ATP Corridor (former CIP 026-3).



PROJECT PHASE/TASK	TOTAL 5- YEAR PROJECT				PROPOSED BUDGET		PROJECTED BUDGET		
					FY 25/26	FY 26/27	FY 27/28	FY 28/29	FY 29/30 & Future Years
Project Dev/Environ.	\$ -				\$ -	\$ -	\$ -	\$ -	\$ -
Design/PS&E	1,300,000				650,000	650,000	-	-	-
Right-of-Way	1,650,000				100,000	1,550,000	-	-	-
Construction	18,400,000				-	-	18,400,000	-	-
Const Admin/Inspect.	1,000,000				-	-	1,000,000	-	-
<b>Total Cost:</b>	<b>\$ 22,350,000</b>				<b>\$ 750,000</b>	<b>\$ 2,200,000</b>	<b>\$ 19,400,000</b>	<b>\$ -</b>	<b>\$ -</b>
<b>FUNDING SOURCES</b>									
503 - TUMF	\$ 139,766				\$ -	\$ 139,766	\$ -	\$ -	\$ -
440 - DIF Roads	2,810,234				750,000	2,060,234	-	-	-
480 - DIF Trails	618,168				-	-	618,168	-	-
450 - DIF Signals	196,000				-	-	196,000	-	-
508 - Local Grants	8,050,420				-	-	8,050,420	-	-
Unfunded	10,535,412				-	-	10,535,412	-	-

**CITY OF WILDOMAR**  
**CAPITAL IMPROVEMENT PROGRAM PROJECT DETAIL SHEET**

FY 25/26 to FY 29/30

**PROJECT SUMMARY**

<b>PROJECT TITLE:</b>	Palomar St. Widening Project (Phase 2)	<b>CIP NO.:</b>	028-2	<b>DEPT:</b>	Public Works
<b>LOCATION:</b>	Gruwell St. to Wildomar Trail	<b>CATEGORY:</b>	Trans. (Roads)	<b>MANAGER:</b>	Warren Repke
<b>INITIATED:</b>	FY 21/22				

**PROJECT DESCRIPTION AND EXHIBIT**

Phase 2 of the Palomar St. Widening Project will widen Palomar St. between Gruwell St. to Wildomar Trail. This project will be designed and constructed concurrently with Phase 1 of the Cemetery Master Plan improvements (see CIP 067-1 for details and additional funding). Improvements on Palomar St. will include the addition of new vehicle lanes to widen the road from two lanes to four lanes, bike lanes, sidewalks, and multi-purpose trails. Design of the project will also take into account the Wildomar Old Town Vision located at the northeast corner of Wildomar Trail and Palomar St. The project will also include improvements to Gruwell St. along the frontage of the cemetery, including roadway widening, bike lanes, curb, gutter, and a pedestrian path (sidewalk and/or trail).



PROJECT PHASE/TASK	TOTAL 5- YEAR PROJECT				PROPOSED BUDGET		PROJECTED BUDGET		
					FY 25/26	FY 26/27	FY 27/28	FY 28/29	FY 29/30 & Future Years
Project Dev/Environ.	\$ -				\$ -	\$ -	\$ -	\$ -	\$ -
Design/PS&E	-				-	-	-	-	-
Right-of-Way	-				-	-	-	-	-
Construction	3,108,500				3,108,500	-	-	-	-
Const Admin/Inspect.	294,250				294,250	-	-	-	-
<b>Total Cost:</b>	<b>\$ 3,402,750</b>				<b>\$ 3,402,750</b>	<b>\$ -</b>	<b>\$ -</b>	<b>\$ -</b>	<b>\$ -</b>
<b>FUNDING SOURCES</b>									
503 - TUMF	\$ 2,066,250				\$ 2,066,250	\$ -	\$ -	\$ -	\$ -
510 - Bond Proceeds	670,000				670,000	-	-	-	-
201 - Measure A	153,000				153,000	-	-	-	-
202 - TDA Fund	216,000				216,000	-	-	-	-
440 - DIF Roads	202,500				202,500				
507 - Misc. State Fund	8,000				8,000				
500 - Capital Reinvest	87,000				87,000	-	-	-	-

**CITY OF WILDOMAR**  
**CAPITAL IMPROVEMENT PROGRAM PROJECT DETAIL SHEET**  
FY 25/26 to FY 29/30

**PROJECT SUMMARY**

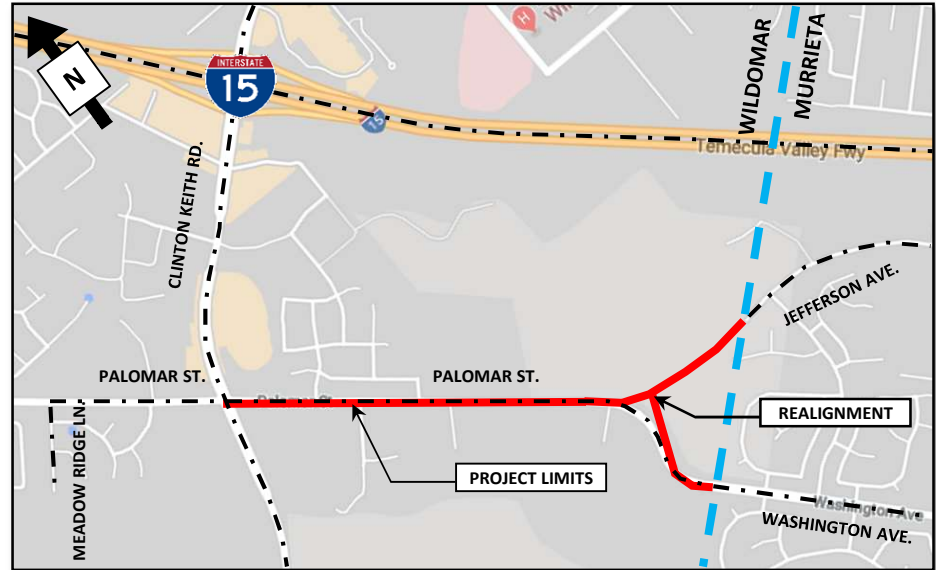
<b>PROJECT TITLE:</b>	<b>Palomar St. Widening Project (Phase 3)</b>	<b>CIP NO.:</b>	028-3	<b>DEPT:</b>	Public Works
<b>LOCATION:</b>	Clinton Keith Rd. to south City Limits/Murrieta	<b>CATEGORY:</b>	Trans. (Roads)	<b>MANAGER:</b>	Ninette Eva
<b>INITIATED:</b>	FY 19/20				

**PROJECT DESCRIPTION AND EXHIBIT**

This project will widen Palomar St. to its ultimate width to provide four lanes of travel with a bike lane, sidewalk and multi-purpose trail on the west side.

This project addresses the projected increase in traffic volumes and the need to provide bike lane, pedestrian access and path of travel to existing school, church and commercial areas.

*\*Note: The environmental phase of this project was covered under CIP 028-1 and has been completed.*



PROJECT PHASE/TASK	TOTAL 5-YEAR PROJECT	PROPOSED BUDGET			PROJECTED BUDGET			
		FY 25/26	FY 26/27		FY 27/28	FY 28/29	FY 29/30 & Future Years	
Project Dev/Environ.	\$ 15,000	\$ 15,000	\$ -		\$ -	\$ -	\$ -	
Design/PS&E	225,000	100,000	100,000		25,000	-	-	
Right-of-Way	200,000	-	150,000		50,000	-	-	
Construction	800,470	-	-		800,470	-	-	
Const Admin/Inspect.	150,000	-	-		150,000	-	-	
<b>Total Cost:</b>	<b>\$ 1,390,470</b>	<b>\$ 115,000</b>	<b>\$ 250,000</b>		<b>\$ 1,025,470</b>	<b>\$ -</b>	<b>\$ -</b>	
<b>FUNDING SOURCES</b>								
503 - TUMF	\$ 365,000	\$ 115,000	\$ 250,000		\$ -	\$ -	\$ -	
202 - TDA Fund	525,235	-	-		525,235	-	-	
Unfunded	500,235	-	-		500,235	-	-	
	-	-	-		-	-	-	
	-	-	-		-	-	-	

**CITY OF WILDOMAR**  
**CAPITAL IMPROVEMENT PROGRAM PROJECT DETAIL SHEET**

FY 25/26 to FY 29/30

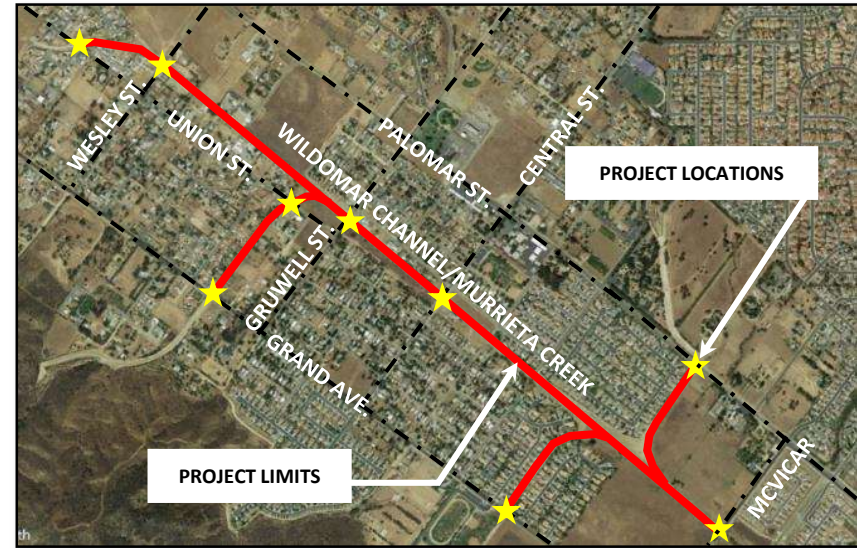
**PROJECT SUMMARY**

<b>PROJECT TITLE:</b>	<b>Wildomar Channel Trail Access</b>	<b>CIP NO.:</b>	043	<b>DEPT:</b>	Public Works
<b>LOCATION:</b>	Wildomar Channel/Murrieta Creek	<b>CATEGORY:</b>	Trails	<b>MANAGER:</b>	Ninette Eva
<b>INITIATED:</b>	FY 19/20				

**PROJECT DESCRIPTION AND EXHIBIT**

The City executed a Master License Agreement with the Riverside County Flood Control District (RCFC) to allow continued public use of the access roads. The City will now need to process Specific Facility License Exhibits (SFLEs) with RCFC for each specific segment of the channel. The project provides additional pedestrian facilities (trail), promotes active transportation, and improves pedestrian connectivity in this part of the City. The project also eliminates the need for the City to enter into event-specific agreements with the Riverside County Flood Control District (RCFC) for use of the access roads during public events (e.g. 5-K Runs, etc...).

Funds have also been allocated in the Right-of-Way Phase for the SFLEs and on-going future maintenance of the trail. Funds in FY 26/27 and FY 27/28 are proposed to remove the locked gates on the east side of the existing Wildomar Channel access roads and complete access and crossing improvements.



PROJECT PHASE/TASK	TOTAL 5-YEAR PROJECT	PROPOSED BUDGET			PROJECTED BUDGET			
		FY 25/26	FY 26/27		FY 27/28	FY 28/29	FY 29/30 & Future Years	
Project Dev/Environ.	\$ 25,000	\$ 25,000	\$ -		\$ -	\$ -	\$ -	
Design/PS&E	200,000	-	75,000		125,000	-	-	
Right-of-Way	55,000	\$ 15,000	\$ 10,000		10,000	10,000	10,000	
Construction	500,000	-	-		-	500,000	-	
Const Admin/Inspect.	50,000	-	-		-	50,000	-	
<b>Total Cost:</b>	<b>\$ 830,000</b>	<b>\$ 40,000</b>	<b>\$ 85,000</b>		<b>\$ 135,000</b>	<b>\$ 560,000</b>	<b>\$ 10,000</b>	
<b>FUNDING SOURCES</b>								
201 - Measure A	\$ 155,000	\$ 40,000	\$ 85,000		\$ 10,000	\$ 10,000	\$ 10,000	
506 - HSIP	58,700	-	-		-	58,700	-	
Unfunded	616,300	-	-		125,000	491,300	-	
	-	-	-		-	-	-	
	-	-	-		-	-	-	

**CITY OF WILDOMAR**  
**CAPITAL IMPROVEMENT PROGRAM PROJECT DETAIL SHEET**

FY 25/26 to FY 29/30

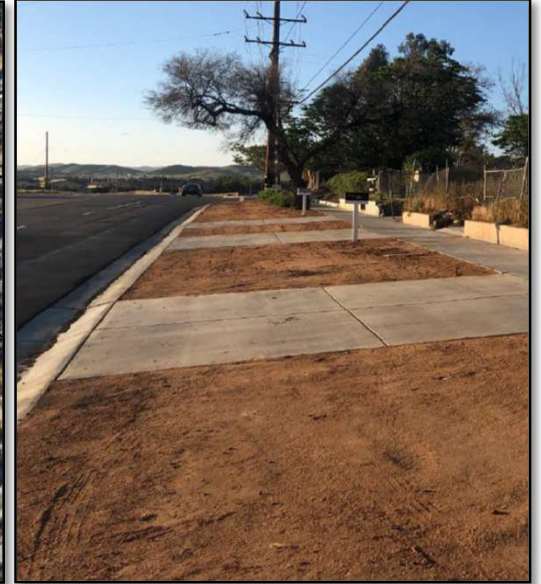
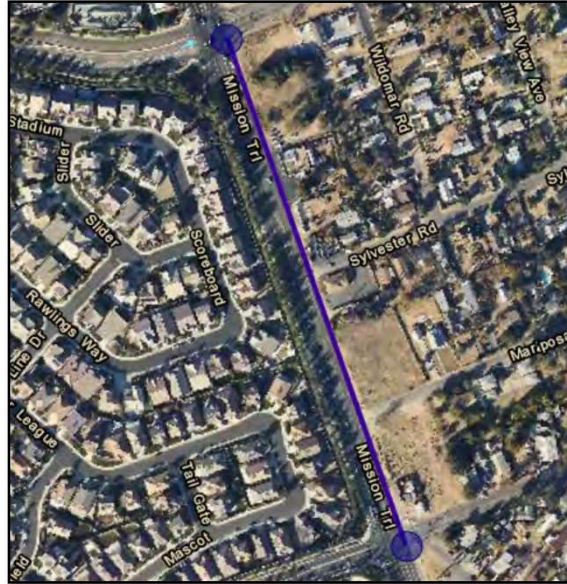
**PROJECT SUMMARY**

<b>PROJECT TITLE:</b>	<b>Mission Trail/Sedco Sidewalk (CDBG) (Phase 3)</b>	<b>CIP NO.:</b>	044-3	<b>DEPT:</b>	Public Works
<b>LOCATION:</b>	Mission Trail (between Malaga Rd. and Elberta Ave.)	<b>CATEGORY:</b>	Trans. (Roads)	<b>MANAGER:</b>	Cameron Luna
<b>INITIATED:</b>	FY 19/20				

**PROJECT DESCRIPTION AND EXHIBIT**

This project will design and construct curb, gutter, sidewalk, and driveway approaches on the east side of Mission Trail. This is Phase 3 of the Sedco (Mission Trail) sidewalk project which will create a contiguous walking path on Mission Trail from Malaga Rd. to Olive St.

This project closes a key infrastructure "gap" where these improvements would enhance the mobility of pedestrians and provide new connectivity to amenities like Malaga Park, and other regional points of interest like Lake Elsinore Storm Stadium.



PROJECT PHASE/TASK	TOTAL 5- YEAR PROJECT				PROPOSED BUDGET		PROJECTED BUDGET		
					FY 25/26	FY 26/27	FY 27/28	FY 28/29	FY 29/30 & Future Years
Project Dev/Environ.	\$ -				\$ -	\$ -	\$ -	\$ -	\$ -
Design/PS&E	20,000				20,000	-	-	-	-
Right-of-Way	10,000				10,000	-	-	-	-
Construction	1,155,000				1,155,000	-	-	-	-
Const Admin/Inspect.	158,000				158,000	-	-	-	-
<b>Total Cost:</b>	<b>\$ 1,343,000</b>				<b>\$ 1,343,000</b>	<b>\$ -</b>	<b>\$ -</b>	<b>\$ -</b>	<b>\$ -</b>
<b>FUNDING SOURCES</b>									
206 - CDBG	\$ 132,515				\$ 132,515	\$ -	\$ -	\$ -	\$ -
120 - Measure AA	-				-	-	-	-	-
201 - Measure A	188,000				188,000	-	-	-	-
202 - TDA Fund	726,000				726,000	-	-	-	-
Unfunded	296,485				296,485	-	-	-	-

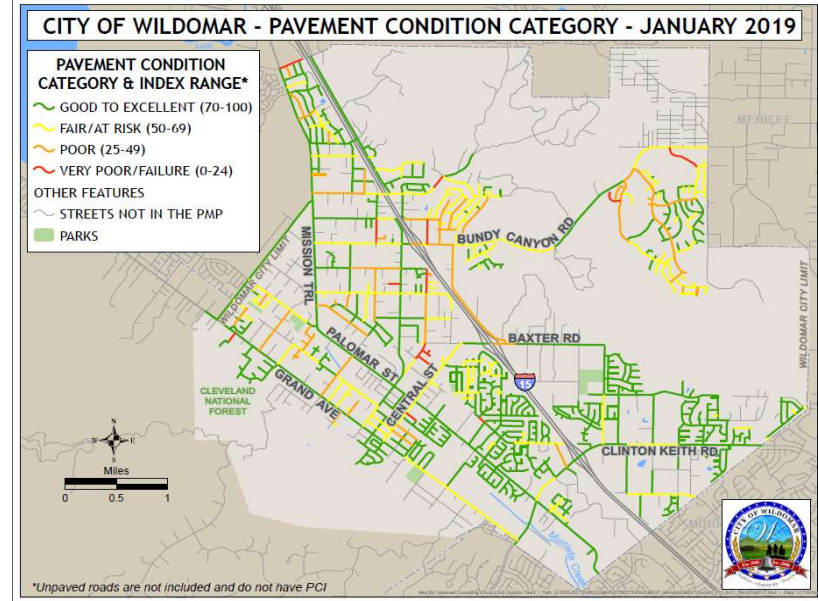
**CITY OF WILDOMAR**  
**CAPITAL IMPROVEMENT PROGRAM PROJECT DETAIL SHEET**  
FY 25/26 to FY 29/30

**PROJECT SUMMARY**

<b>PROJECT TITLE:</b>	<b>Pavement Management Program</b>	<b>CIP NO.:</b>	050-1	<b>DEPT:</b>	Public Works
<b>LOCATION:</b>	City Wide	<b>CATEGORY:</b>	Trans. (Maint.)	<b>MANAGER:</b>	Jason Farag
<b>INITIATED:</b>	FY 23/24				

**PROJECT DESCRIPTION AND EXHIBIT**

This project will prepare a new/updated Pavement Management Program (PMP) Report for the City, incorporating all of the recent improvements and projects that have occurred since the last major PMP Update in 2019. This Report will provide the information needed to continue to effectively administer the City's Pavement Rehabilitation and Slurry Seal Programs.



PROJECT PHASE/TASK	TOTAL 5-YEAR PROJECT	PROPOSED BUDGET			PROJECTED BUDGET			
		FY 25/26	FY 26/27		FY 27/28	FY 28/29	FY 29/30 & Future Years	
Project Dev/Environ.	\$ -	\$ -	\$ -		\$ -	\$ -	\$ -	
Design/PS&E	118,000	118,000	-		-	-	-	
Right-of-Way	-	-	-		-	-	-	
Construction	-	-	-		-	-	-	
Const Admin/Inspect.	-	-	-		-	-	-	
<b>Total Cost:</b>	<b>\$ 118,000</b>	<b>\$ 118,000</b>	<b>\$ -</b>		<b>\$ -</b>	<b>\$ -</b>	<b>\$ -</b>	
<b>FUNDING SOURCES</b>								
201 - Measure A	\$ 15,500	\$ 15,500	\$ -		\$ -	\$ -	\$ -	
203 - AQMD	27,500	27,500	-		-	-	-	
501 - RMRA (SB1)	75,000	75,000	-		-	-	-	
	-	-	-		-	-	-	
	-	-	-		-	-	-	

**CITY OF WILDOMAR**  
**CAPITAL IMPROVEMENT PROGRAM PROJECT DETAIL SHEET**  
FY 25/26 to FY 29/30

PROJECT SUMMARY					
PROJECT TITLE:	Pavement Rehabilitation Program	CIP NO.:	057	DEPT:	Public Works
LOCATION:	Citywide	CATEGORY:	Trans. (Maint.)	MANAGER:	Cameron Luna
INITIATED:	FY 18/19				

**PROJECT DESCRIPTION AND EXHIBIT**

Annual Pavement Rehabilitation Program:

This program provides for the rehabilitation of selected streets based on the City Pavement Management Report, Maintenance Records, and Citizen Input.



PROJECT PHASE/TASK	TOTAL 5-YEAR PROJECT				PROPOSED BUDGET		PROJECTED BUDGET		
					FY 25/26	FY 26/27	FY 27/28	FY 28/29	FY 29/30 & Future Years
Project Dev/Environ.	\$ -				\$ -	\$ -	\$ -	\$ -	\$ -
Design/PS&E	325,000				65,000	65,000	65,000	65,000	65,000
Right-of-Way	-				-	-	-	-	-
Construction	7,730,000				2,730,000	1,250,000	1,250,000	1,250,000	1,250,000
Const Admin/Inspect.	500,000				100,000	100,000	100,000	100,000	100,000
<b>Total Cost:</b>	<b>\$ 8,555,000</b>				<b>\$ 2,895,000</b>	<b>\$ 1,415,000</b>	<b>\$ 1,415,000</b>	<b>\$ 1,415,000</b>	<b>\$ 1,415,000</b>
<b>FUNDING SOURCES</b>									
201 - Measure A	\$ 825,000				\$ 165,000	\$ 165,000	\$ 165,000	\$ 165,000	\$ 165,000
501 - RMRA (SB1)	6,480,000				2,480,000	1,000,000	1,000,000	1,000,000	1,000,000
120 - Measure AA	1,250,000				250,000	250,000	250,000	250,000	250,000
	-				-	-	-	-	-
	-				-	-	-	-	-

**CITY OF WILDOMAR**  
**CAPITAL IMPROVEMENT PROGRAM PROJECT DETAIL SHEET**  
FY 25/26 to FY 29/30

**PROJECT SUMMARY**

<b>PROJECT TITLE:</b>	Annual Slurry Seal Program	<b>CIP NO.:</b>	058	<b>DEPT:</b>	Public Works
<b>LOCATION:</b>	Citywide	<b>CATEGORY:</b>	Trans. (Maint.)	<b>MANAGER:</b>	Cameron Luna
<b>INITIATED:</b>	FY 20/21				

**PROJECT DESCRIPTION AND EXHIBIT**

Annual Street Preservation Program:

This program provides for the preservation of existing streets through the application of a Slurry Seal to the street surface. Streets are selected based on the City Pavement Management Report, Maintenance Records, and Citizen Input.



PROJECT PHASE/TASK	TOTAL 5-YEAR PROJECT	PROPOSED BUDGET			PROJECTED BUDGET				
					FY 25/26	FY 26/27	FY 27/28	FY 28/29	FY 29/30 & Future Years
Project Dev/Environ.	\$ -				\$ -	\$ -	\$ -	\$ -	\$ -
Design/PS&E	-				-	-	-	-	-
Right-of-Way	-				-	-	-	-	-
Construction	1,750,000				350,000	350,000	350,000	350,000	350,000
Const Admin/Inspect.	-				-	-	-	-	-
<b>Total Cost:</b>	<b>\$ 1,750,000</b>				<b>\$ 350,000</b>	<b>\$ 350,000</b>	<b>\$ 350,000</b>	<b>\$ 350,000</b>	<b>\$ 350,000</b>
<b>FUNDING SOURCES</b>									
120 - Measure AA	\$ 1,750,000				\$ 350,000	\$ 350,000	\$ 350,000	\$ 350,000	\$ 350,000
	-				-	-	-	-	-
	-				-	-	-	-	-
	-				-	-	-	-	-
	-				-	-	-	-	-

**CITY OF WILDOMAR**  
**CAPITAL IMPROVEMENT PROGRAM PROJECT DETAIL SHEET**  
FY 25/26 to FY 29/30

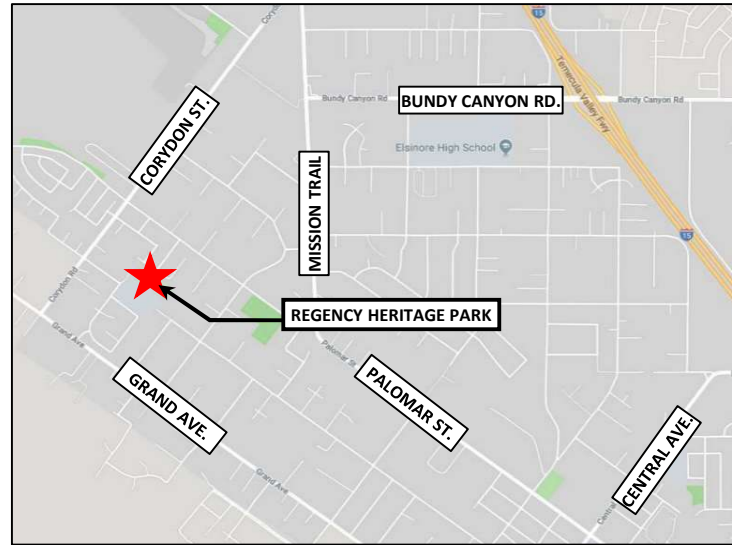
**PROJECT SUMMARY**

<b>PROJECT TITLE:</b>	Regency-Heritage Park Rehabilitation	<b>CIP NO.:</b>	061	<b>DEPT:</b>	Parks and Rec
<b>LOCATION:</b>	Regency- Heritage Park	<b>CATEGORY:</b>	Parks	<b>MANAGER:</b>	Unassigned
<b>INITIATED:</b>	FY 19/20				

**PROJECT DESCRIPTION AND EXHIBIT**

This project prepares a Concept Plan and Construction Cost Estimate, including a Flood Control/Grading Analysis, for the rehabilitation of the park.

The park is in need of improvements to control drainage and upgrade facilities. This work will provide a concept plan and costs for the needed improvements.



PROJECT PHASE/TASK	TOTAL 5- YEAR PROJECT				PROPOSED BUDGET		PROJECTED BUDGET		
					FY 25/26	FY 26/27	FY 27/28	FY 28/29	FY 29/30 & Future Years
Project Dev/Environ.	\$ -				\$ -	\$ -	\$ -	\$ -	\$ -
Design/PS&E	326,000				-	-	-	-	326,000
Right-of-Way	-				-	-	-	-	-
Construction	4,600,000				-	-	-	-	4,600,000
Const Admin/Inspect.	276,000				-	-	-	-	276,000
<b>Total Cost:</b>	<b>\$ 5,202,000</b>				<b>\$ -</b>	<b>\$ -</b>	<b>\$ -</b>	<b>\$ -</b>	<b>\$ 5,202,000</b>
<b>FUNDING SOURCES</b>									
Unfunded	\$ 5,202,000				\$ -	\$ -	\$ -	\$ -	\$ 5,202,000
	-				-	-	-	-	-
	-				-	-	-	-	-
	-				-	-	-	-	-
	-				-	-	-	-	-

**CITY OF WILDOMAR**  
**CAPITAL IMPROVEMENT PROGRAM PROJECT DETAIL SHEET**  
FY 25/26 to FY 29/30

**PROJECT SUMMARY**

<b>PROJECT TITLE:</b>	<b>New 27 Acre Park</b>	<b>CIP NO.:</b>	062-1	<b>DEPT:</b>	Parks and Rec
<b>LOCATION:</b>	Northwest Corner of La Estrella St. and Porras Rd.	<b>CATEGORY:</b>	Parks	<b>MANAGER:</b>	Cameron Luna
<b>INITIATED:</b>	FY 19/20				

**PROJECT DESCRIPTION AND EXHIBIT**

This project includes the preparation of plans, specifications and cost estimates, environmental permits, and construction for Phase 1 development of the park. Phase 1 includes substantial on-site grading, stormwater facilities, pedestrian walkways and trails, bicycle park area, bridge crossings, parking areas, and landscape establishment.



PROJECT PHASE/TASK	TOTAL 5-YEAR PROJECT	PROPOSED BUDGET			PROJECTED BUDGET			
		FY 25/26	FY 26/27		FY 27/28	FY 28/29	FY 29/30 & Future Years	
Project Dev/Environ.	\$ 150,000	\$ 150,000	\$ -		\$ -	\$ -	\$ -	
Design/PS&E	90,000	90,000	-		-	-	-	
Right-of-Way	-	-	-		-	-	-	
Construction	5,060,000	2,024,000	3,036,000		-	-	-	
Const Admin/Inspect.	600,000	240,000	360,000		-	-	-	
<b>Total Cost:</b>	<b>\$ 5,900,000</b>	<b>\$ 2,504,000</b>	<b>\$ 3,396,000</b>		<b>\$ -</b>	<b>\$ -</b>	<b>\$ -</b>	
<b>FUNDING SOURCES</b>								
461 - DIF Park Imp.	\$ 2,642,500	\$ 1,292,200	\$ 1,350,300		\$ -	\$ -	\$ -	
440 - DIF Roads	228,000	-	228,000		-	-	-	
507 - Misc. State Func	3,029,500	1,211,800	1,817,700		-	-	-	
	-	-	-		-	-	-	
	-	-	-		-	-	-	

**CITY OF WILDOMAR**  
**CAPITAL IMPROVEMENT PROGRAM PROJECT DETAIL SHEET**

FY 25/26 to FY 29/30

**PROJECT SUMMARY**

<b>PROJECT TITLE:</b>	<b>New 27 Acre Park</b>	<b>CIP NO.:</b>	062-2	<b>DEPT:</b>	Parks and Rec
<b>LOCATION:</b>	Northwest Corner of La Estrella St. and Porras Rd.	<b>CATEGORY:</b>	Parks	<b>MANAGER:</b>	Cameron Luna
<b>INITIATED:</b>	FY 24/25				

**PROJECT DESCRIPTION AND EXHIBIT**

This project includes the preparation of plans, specifications and cost estimates for Phase 2 development of the park. Phase 2 includes the remainder of the proposed park improvements identified in the Park Master Plan for the 27-Acre Park, including an outdoor amphiteater, courts for outdoor sports, gardens and play areas, and a potential community center building.



PROJECT PHASE/TASK	TOTAL 5- YEAR PROJECT				PROPOSED BUDGET		PROJECTED BUDGET		
					FY 25/26	FY 26/27	FY 27/28	FY 28/29	FY 29/30 & Future Years
Project Dev/Environ.	\$ -				\$ -	\$ -	\$ -	\$ -	\$ -
Design/PS&E	250,000				-	250,000	-	-	-
Right-of-Way	-				-	-	-	-	-
Construction	15,000,000				-	-	15,000,000	-	-
Const Admin/Inspect.	300,000				-	-	300,000	-	-
<b>Total Cost:</b>	<b>\$ 15,550,000</b>				<b>\$ -</b>	<b>\$ 250,000</b>	<b>\$ 15,300,000</b>	<b>\$ -</b>	<b>\$ -</b>
<b>FUNDING SOURCES</b>									
461 - DIF Park Imp.	\$ 250,000				\$ -	\$ 250,000	\$ -	\$ -	\$ -
Unfunded	15,300,000				-	-	15,300,000	-	-
	-				-	-	-	-	-
	-				-	-	-	-	-
	-				-	-	-	-	-

**CITY OF WILDOMAR**  
**CAPITAL IMPROVEMENT PROGRAM PROJECT DETAIL SHEET**  
FY 25/26 to FY 29/30

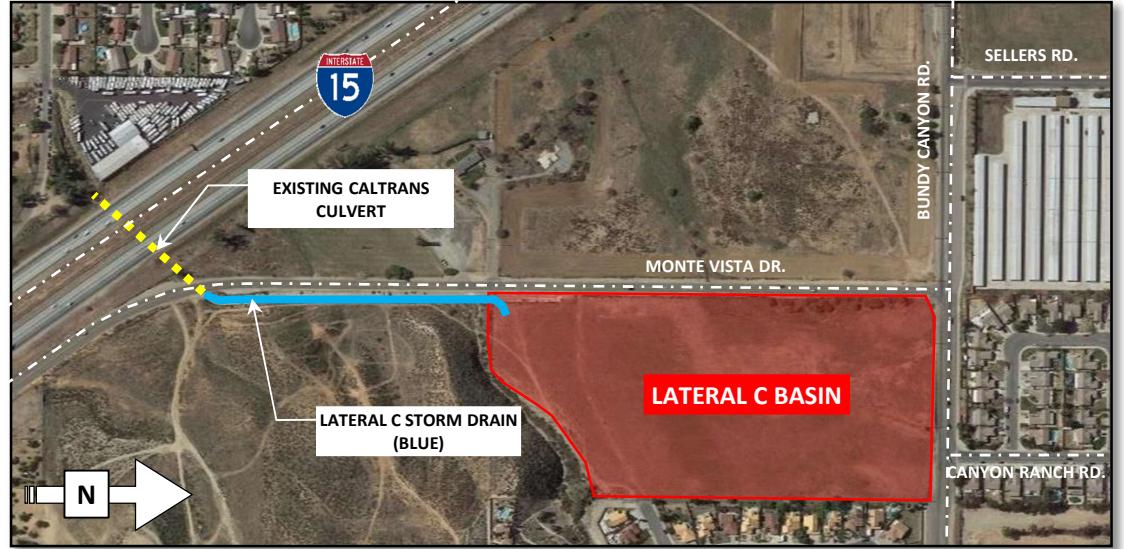
**PROJECT SUMMARY**

<b>PROJECT TITLE:</b>	Line C Basin and Storm Drain	<b>CIP NO.:</b>	063	<b>DEPT:</b>	Public Works
<b>LOCATION:</b>	Southeast Corner of Bundy Canyon Rd. and Monte Vista Dr.	<b>CATEGORY:</b>	Drainage	<b>MANAGER:</b>	Jason Farag
<b>INITIATED:</b>	FY 19/20				

**PROJECT DESCRIPTION AND EXHIBIT**

This is a Riverside County Flood Control initiated and managed project. Major elements include:

- A retention basin as the southeast corner of Bundy Canyon Rd. and Monte Vista Dr.
- Reinforced concrete box storm drain from the basin south on Monte Vista Dr. to the Caltrans culvert under the I-15 Freeway.
- City has agreed to pay for the design and construction of street improvements on Monte Vista including DG Trail and Fencing. The Construction cost accounts for all optional items including decorative fencing.



PROJECT PHASE/TASK	TOTAL 5- YEAR PROJECT				PROPOSED BUDGET		PROJECTED BUDGET		
					FY 25/26	FY 26/27	FY 27/28	FY 28/29	FY 29/30 & Future Years
Project Dev/Environ.	\$ -				\$ -	\$ -	\$ -	\$ -	\$ -
Design/PS&E	-				-	-	-	-	-
Right-of-Way	-				-	-	-	-	-
Construction	873,000				873,000	-	-	-	-
Const Admin/Inspect.	20,000				20,000	-	-	-	-
<b>Total Cost:</b>	<b>\$ 893,000</b>				<b>\$ 893,000</b>	<b>\$ -</b>	<b>\$ -</b>	<b>\$ -</b>	<b>\$ -</b>
<b>FUNDING SOURCES</b>									
201 - Measure A	\$ 378,000				\$ 378,000	\$ -	\$ -	\$ -	\$ -
440 - DIF Roads	515,000				515,000	-	-	-	-
	-				-	-	-	-	-
	-				-	-	-	-	-
	-				-	-	-	-	-

**CITY OF WILDOMAR**  
**CAPITAL IMPROVEMENT PROGRAM PROJECT DETAIL SHEET**  
FY 25/26 to FY 29/30

**PROJECT SUMMARY**

<b>PROJECT TITLE:</b>	Unpaved Roadway Enhancement Program	<b>CIP NO.:</b>	066	<b>DEPT:</b>	Public Works
<b>LOCATION:</b>	Citywide	<b>CATEGORY:</b>	Trans. (Roads)	<b>MANAGER:</b>	Unassigned
<b>INITIATED:</b>	FY 19/20				

**PROJECT DESCRIPTION AND EXHIBIT**

The City Council approved the Right-of-Way Enhancement Program to provide options for the improvement and maintenance of unpaved roads throughout the City.



PROJECT PHASE/TASK	TOTAL 5-YEAR PROJECT				PROPOSED BUDGET		PROJECTED BUDGET		
					FY 25/26	FY 26/27	FY 27/28	FY 28/29	FY 29/30 & Future Years
Project Dev/Environ.	\$ 35,000				\$ 35,000	\$ -	\$ -	\$ -	\$ -
Design/PS&E	60,000				60,000	-	-	-	-
Right-of-Way	15,000				15,000	-	-	-	-
Construction	300,000				-	150,000	150,000	-	-
Const Admin/Inspect.	100,000				-	50,000	50,000	-	-
<b>Total Cost:</b>	<b>\$ 510,000</b>				<b>\$ 110,000</b>	<b>\$ 200,000</b>	<b>\$ 200,000</b>	<b>\$ -</b>	<b>\$ -</b>
<b>FUNDING SOURCES</b>									
120 - Measure AA	\$ -				\$ -	\$ -	\$ -	\$ -	\$ -
201 - Measure A	-				-	-	-	-	-
203 - AQMD	415,000				110,000	152,500	152,500	-	-
Unfunded	95,000				-	47,500	47,500	-	-
	-				-	-	-	-	-

**CITY OF WILDOMAR**  
**CAPITAL IMPROVEMENT PROGRAM PROJECT DETAIL SHEET**

FY 25/26 to FY 29/30

**PROJECT SUMMARY**

<b>PROJECT TITLE:</b>	Phase 1 Cemetery Improvements	<b>CIP NO.:</b>	067-1	<b>DEPT:</b>	Public Works
<b>LOCATION:</b>	Wildomar Cemetery (Gruwell and Palomar)	<b>CATEGORY:</b>	Cemetery	<b>MANAGER:</b>	Warren Repke
<b>INITIATED:</b>	FY 21/22				

**PROJECT DESCRIPTION AND EXHIBIT**

Design and Construction of Phase 1 Improvements consisting of:

- Americans with Disabilities Act (ADA) Improvements
- Removal and construction of new cemetery walls and gates.
- Landscaping on street side of the walls.

*Note: This project will be designed concurrently with CIP 028-2 (Palomar St. Widening along the cemetery frontage). See CIP 028-2 for details.*



PROJECT PHASE/TASK	TOTAL 5- YEAR PROJECT				PROPOSED BUDGET		PROJECTED BUDGET		
					FY 25/26	FY 26/27	FY 27/28	FY 28/29	FY 29/30 & Future Years
Project Dev/Environ.	\$ -				\$ -	\$ -	\$ -	\$ -	\$ -
Design/PS&E	-				-	-	-	-	-
Right-of-Way	-				-	-	-	-	-
Construction	461,000				461,000	-	-	-	-
Const Admin/Inspect.	27,000				27,000	-	-	-	-
<b>Total Cost:</b>	<b>\$ 488,000</b>				<b>\$ 488,000</b>	<b>\$ -</b>	<b>\$ -</b>	<b>\$ -</b>	<b>\$ -</b>
<b>FUNDING SOURCES</b>									
302 - Cemetery CIP	\$ 488,000				\$ 488,000	\$ -	\$ -	\$ -	\$ -
	-				-	-	-	-	-
	-				-	-	-	-	-
	-				-	-	-	-	-
	-				-	-	-	-	-

**CITY OF WILDOMAR**  
**CAPITAL IMPROVEMENT PROGRAM PROJECT DETAIL SHEET**

FY 25/26 to FY 29/30

**PROJECT SUMMARY**

<b>PROJECT TITLE:</b>	<b>Cemetery Master Plan Update</b>	<b>CIP NO.:</b>	067-2	<b>DEPT:</b>	Public Works
<b>LOCATION:</b>	Wildomar Cemetery (Gruwell and Palomar)	<b>CATEGORY:</b>	Cemetery	<b>MANAGER:</b>	Daniel Torres
<b>INITIATED:</b>	FY 25/26				

**PROJECT DESCRIPTION AND EXHIBIT**

This project includes an update to the existing Cemetery Master Plan to reflect recent changes and current conditions. This project will also incorporate the use of a cemetery parcel for a maintenance operations center for cemetery purposes as well as for Citywide maintenance purposes.

*Note: This project will be designed concurrently with CIP 098 (Field Operations Center/Corporation Yard). See CIP 098 for details.*



PROJECT PHASE/TASK	TOTAL 5-YEAR PROJECT				PROPOSED BUDGET		PROJECTED BUDGET		
					FY 25/26	FY 26/27	FY 27/28	FY 28/29	FY 29/30 & Future Years
Project Dev/Environ.	\$ -				\$ -	\$ -	\$ -	\$ -	\$ -
Design/PS&E	80,000				80,000	-	-	-	-
Right-of-Way	-				-	-	-	-	-
Construction	-				-	-	-	-	-
Const Admin/Inspect.	-				-	-	-	-	-
<b>Total Cost:</b>	<b>\$ 80,000</b>				<b>\$ 80,000</b>	<b>\$ -</b>	<b>\$ -</b>	<b>\$ -</b>	<b>\$ -</b>
<b>FUNDING SOURCES</b>									
302 - Cemetery CIP	\$ 80,000				\$ 80,000	\$ -	\$ -	\$ -	\$ -
	-				-	-	-	-	-
	-				-	-	-	-	-
	-				-	-	-	-	-
	-				-	-	-	-	-

**CITY OF WILDOMAR**  
**CAPITAL IMPROVEMENT PROGRAM PROJECT DETAIL SHEET**  
FY 25/26 to FY 29/30

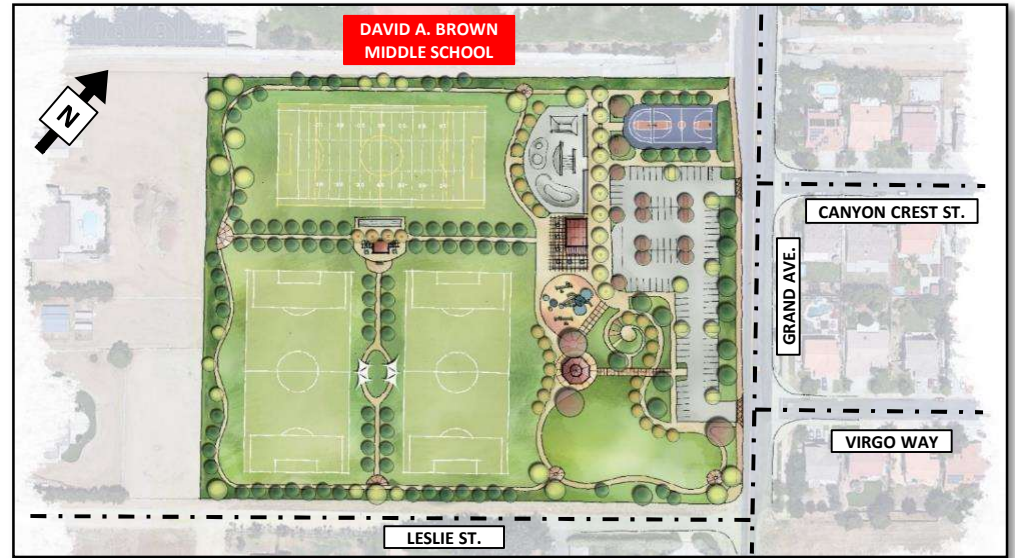
**PROJECT SUMMARY**

<b>PROJECT TITLE:</b>	<b>New 11 Acre Park</b>	<b>CIP NO.:</b>	068	<b>DEPT:</b>	Parks and Rec
<b>LOCATION:</b>	Northwest Corner of Grand Ave. and Leslie Street	<b>CATEGORY:</b>	Parks	<b>MANAGER:</b>	Unassigned
<b>INITIATED:</b>	FY 21/22				

**PROJECT DESCRIPTION AND EXHIBIT**

This project includes the preparation of concepts for development of the park.

This project will complete the planning phase for the new park site.



PROJECT PHASE/TASK	TOTAL 5-YEAR PROJECT				PROPOSED BUDGET		PROJECTED BUDGET		
					FY 25/26	FY 26/27	FY 27/28	FY 28/29	FY 29/30 & Future Years
Project Dev/Environ.	\$ 150,000				\$ -	\$ -	\$ -	\$ -	\$ 150,000
Design/PS&E	-				-	-	-	-	-
Right-of-Way	-				-	-	-	-	-
Construction	-				-	-	-	-	-
Const Admin/Inspect.	-				-	-	-	-	-
<b>Total Cost:</b>	<b>\$ 150,000</b>				<b>\$ -</b>	<b>\$ -</b>	<b>\$ -</b>	<b>\$ -</b>	<b>\$ 150,000</b>
<b>FUNDING SOURCES</b>									
461 - DIF Park Imp.	\$ 150,000				\$ -	\$ -	\$ -	\$ -	\$ 150,000
	-				-	-	-	-	-
	-				-	-	-	-	-
	-				-	-	-	-	-
	-				-	-	-	-	-

**CITY OF WILDOMAR**  
**CAPITAL IMPROVEMENT PROGRAM PROJECT DETAIL SHEET**

FY 25/26 to FY 29/30

PROJECT SUMMARY					
PROJECT TITLE:	Citywide Drainage Improvements	CIP NO.:	069	DEPT:	Public Works
LOCATION:	To Be Determined	CATEGORY:	Drainage	MANAGER:	Unassigned
INITIATED:	FY 21/22				

**PROJECT DESCRIPTION AND EXHIBIT**

Identify high priority local drainage projects from the Master Drainage Plan. Prepare PS&E.

For FY 25/26 through FY 27/28, funds have been allocated for the design and construction of the Union St. to Sheets Ln. storm drain, located in MDP Subregion S6, along with some potential flow improvements in the private drainage course (between Regency Heritage Park and Corydon Rd.) that will be part of a future MDP facility.



PROJECT PHASE/TASK	TOTAL 5-YEAR PROJECT				PROPOSED BUDGET		PROJECTED BUDGET		
					FY 25/26	FY 26/27	FY 27/28	FY 28/29	FY 29/30 & Future Years
Project Dev/Environ.	\$ 40,000				\$ 10,000	\$ 10,000	\$ -	\$ 10,000	\$ 10,000
Design/PS&E	200,000				50,000	50,000	-	50,000	50,000
Right-of-Way	60,000				30,000	30,000	-	-	-
Construction	960,000				-	-	160,000	400,000	400,000
Const Admin/Inspect.	155,000				-	-	75,000	40,000	40,000
<b>Total Cost:</b>	<b>\$ 1,415,000</b>				<b>\$ 90,000</b>	<b>\$ 90,000</b>	<b>\$ 235,000</b>	<b>\$ 500,000</b>	<b>\$ 500,000</b>
<b>FUNDING SOURCES</b>									
201 - Measure A	\$ 195,000				\$ 60,000	\$ 60,000	\$ 75,000	\$ -	\$ -
451 - DIF Drainage	60,000				30,000	30,000	-	-	-
Unfunded	1,160,000				-	-	160,000	500,000	500,000
	-				-	-	-	-	-
	-				-	-	-	-	-

**CITY OF WILDOMAR**  
**CAPITAL IMPROVEMENT PROGRAM PROJECT DETAIL SHEET**

FY 25/26 to FY 29/30

**PROJECT SUMMARY**

<b>PROJECT TITLE:</b>	<b>Bundy Canyon Rd./I-15 Interchange</b>	<b>CIP NO.:</b>	070	<b>DEPT:</b>	Public Works
<b>LOCATION:</b>	Bundy Canyon Rd. and I-15 Freeway	<b>CATEGORY:</b>	Trans. (Roads)	<b>MANAGER:</b>	Jason Farag
<b>INITIATED:</b>	FY 20/21				

**PROJECT DESCRIPTION AND EXHIBIT**

Improve the Bundy Canyon Rd. and I-15 Interchange to ultimate standards.

The Riverside County Transportation Commission (RCTC) has agreed to manage this project on behalf of the City and will manage the consultant contracts for this project. The City has entered into a three-party agreement between RCTC and the Western Regional Council of Governments (WRCOG). Under this agreement, WRCOG will reimburse RCTC and its consultants directly for project costs. Therefore, the City's budget for this project only reflects City staff costs. Consultant costs and future construction costs are not included in this budget.



PROJECT PHASE/TASK	TOTAL 5- YEAR PROJECT				PROPOSED BUDGET		PROJECTED BUDGET		
					FY 25/26	FY 26/27	FY 27/28	FY 28/29	FY 29/30 & Future Years
Project Dev/Environ.	\$ 30,000				\$ 15,000	\$ 15,000	\$ -	\$ -	\$ -
Design/PS&E	75,000				-	-	25,000	25,000	25,000
Right-of-Way	-				-	-	-	-	-
Construction	-				-	-	-	-	-
Const Admin/Inspect.	25,000				-	-	-	-	25,000
<b>Total Cost:</b>	<b>\$ 130,000</b>				<b>\$ 15,000</b>	<b>\$ 15,000</b>	<b>\$ 25,000</b>	<b>\$ 25,000</b>	<b>\$ 50,000</b>
<b>FUNDING SOURCES</b>									
503 - TUMF	\$ 130,000				\$ 15,000	\$ 15,000	\$ 25,000	\$ 25,000	\$ 50,000
Unfunded	-				-	-	-	-	-
	-				-	-	-	-	-
	-				-	-	-	-	-
	-				-	-	-	-	-

**CITY OF WILDOMAR**  
**CAPITAL IMPROVEMENT PROGRAM PROJECT DETAIL SHEET**

FY 25/26 to FY 29/30

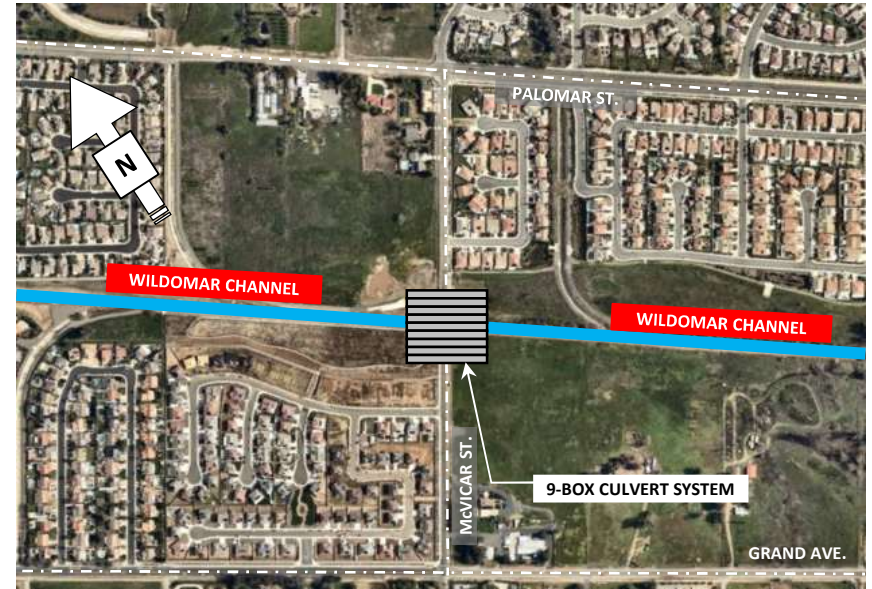
**PROJECT SUMMARY**

<b>PROJECT TITLE:</b>	TR 31667 DIF Credit/Reimbursement	<b>CIP NO.:</b>	073-1	<b>DEPT:</b>	Public Works
<b>LOCATION:</b>	Grand Ave./McVicar St.	<b>CATEGORY:</b>	Other	<b>MANAGER:</b>	Jason Farag
<b>INITIATED:</b>	FY 19/20				

**PROJECT DESCRIPTION AND EXHIBIT**

This project replaces CIP 073 which was specific to the Murrieta Creek/McVicar St. culvert improvements (removal of existing CMP culverts and installation of a concrete box culvert system and associated channel improvements by the developer of TR 31667). This project has now been expanded to identify and budget for DIF reimbursements that the developer of TR 31667 is eligible for, for the construction of the following DIF eligible public improvements:

- McVicar St./Murrieta Creek Culvert (DIF Roads/Bridges)
- Grand Ave. Street Improvements (DIF Roads)
- Grand Ave. Trail (DIF Trails)
- Grand Ave./McVicar St. Intersection (DIF Roads/Intersections)
- Palomar St./McVicar St. Traffic Signal (DIF Signals)
- Murrieta Creek Park (DIF Park Land and Park Improvements)



PROJECT PHASE/TASK	TOTAL 5- YEAR PROJECT				PROPOSED BUDGET		PROJECTED BUDGET		
					FY 25/26	FY 26/27	FY 27/28	FY 28/29	FY 29/30 & Future Years
Project Dev/Environ.	\$ -				\$ -	\$ -	\$ -	\$ -	\$ -
Design/PS&E	-				-	-	-	-	-
Right-of-Way	-				-	-	-	-	-
Construction	2,199,170				2,199,170	-	-	-	-
Const Admin/Inspect.	-				-	-	-	-	-
<b>Total Cost:</b>	<b>\$ 2,199,170</b>				<b>\$ 2,199,170</b>	<b>\$ -</b>	<b>\$ -</b>	<b>\$ -</b>	<b>\$ -</b>
<b>FUNDING SOURCES</b>									
440 - DIF Roads	\$ 1,285,865				\$ 1,285,865	\$ -	\$ -	\$ -	\$ -
450 - DIF Signals	332,000				332,000	-	-	-	-
460 - DIF Park Land	63,000				63,000	-	-	-	-
461 - DIF Park Imp.	420,194				420,194	-	-	-	-
480 - DIF Trails	98,111				98,111	-	-	-	-

**CITY OF WILDOMAR**  
**CAPITAL IMPROVEMENT PROGRAM PROJECT DETAIL SHEET**  
FY 25/26 to FY 29/30

**PROJECT SUMMARY**

<b>PROJECT TITLE:</b>	Wildomar Trail/I-15 Interchange	<b>CIP NO.:</b>	074	<b>DEPT:</b>	Public Works
<b>LOCATION:</b>	Wildomar Trail and I-15 Freeway	<b>CATEGORY:</b>	Trans. (Roads)	<b>MANAGER:</b>	Jason Farag
<b>INITIATED:</b>	FY 20/21				

**PROJECT DESCRIPTION AND EXHIBIT**

Improve the Wildomar Trail and I-15 Interchange to ultimate standards.

The Riverside County Transportation Commission (RCTC) has agreed to manage this project on behalf of the City and will manage the consultant contracts for this project. The City has entered into a three-party agreement between RCTC and the Western Regional Council of Governments (WRCOG). Under this agreement, WRCOG will reimburse RCTC and its consultants directly for project costs. Therefore, the City's budget for this project only reflects City staff costs. Consultant costs and future construction costs are not included in this budget.



PROJECT PHASE/TASK	TOTAL 5- YEAR PROJECT				PROPOSED BUDGET		PROJECTED BUDGET		
					FY 25/26	FY 26/27	FY 27/28	FY 28/29	FY 29/30 & Future Years
Project Dev/Environ.	\$ 30,000				\$ 15,000	\$ 15,000	\$ -	\$ -	\$ -
Design/PS&E	75,000				-	-	25,000	25,000	25,000
Right-of-Way	-				-	-	-	-	-
Construction	-				-	-	-	-	-
Const Admin/Inspect.	25,000				-	-	-	-	25,000
<b>Total Cost:</b>	<b>\$ 130,000</b>				<b>\$ 15,000</b>	<b>\$ 15,000</b>	<b>\$ 25,000</b>	<b>\$ 25,000</b>	<b>\$ 50,000</b>
<b>FUNDING SOURCES</b>									
503 - TUMF	\$ 130,000				\$ 15,000	\$ 15,000	\$ 25,000	\$ 25,000	\$ 50,000
Unfunded	-				-	-	-	-	-
	-				-	-	-	-	-
	-				-	-	-	-	-
	-				-	-	-	-	-

**CITY OF WILDOMAR**  
**CAPITAL IMPROVEMENT PROGRAM PROJECT DETAIL SHEET**

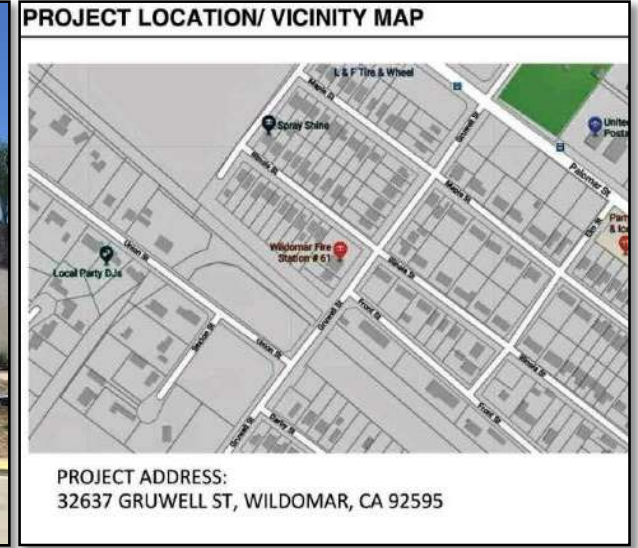
FY 25/26 to FY 29/30

**PROJECT SUMMARY**

<b>PROJECT TITLE:</b>	Fire Station 61 Site Improvements	<b>CIP NO.:</b>	080	<b>DEPT:</b>	Comm. Svcs.
<b>LOCATION:</b>	32637 Gruwell St	<b>CATEGORY:</b>	Buildings	<b>MANAGER:</b>	Daniel Torres
<b>INITIATED:</b>	FY 19/20				

**PROJECT DESCRIPTION AND EXHIBIT**

This project aims to repair or replace the existing septic tank, and add a back-up generator for the site. Fire and EMS services within Wildomar are currently contracted through Cal Fire/Riverside County Fire, whom have been contracted for these services since the city's incorporation in 2008. Located at 32637 Gruwell Street in the central part of the City, Wildomar Fire Station 61 was first established in the 1980's and is the only owned building operated by the City after it was conveyed from the County of Riverside in 2016. As Fire Station 61 approaches 40 years and increased use with the EMS services that were added in FY 19/20, proposed upgrades to the property are to be evaluated for potential retrofit improvements, in effort to maintain the first responder levels of service that are provided from this location.



PROJECT PHASE/TASK	TOTAL 5-YEAR PROJECT				PROPOSED BUDGET		PROJECTED BUDGET		
					FY 25/26	FY 26/27	FY 27/28	FY 28/29	FY 29/30 & Future Years
Project Dev/Environ.	\$ -				\$ -	\$ -	\$ -	\$ -	\$ -
Design/PS&E	-				-	-	-	-	-
Right-of-Way	-				-	-	-	-	-
Construction	110,000				110,000	-	-	-	-
Const Admin/Inspect.	-				-	-	-	-	-
<b>Total Cost:</b>	<b>\$ 110,000</b>				<b>\$ 110,000</b>	<b>\$ -</b>	<b>\$ -</b>	<b>\$ -</b>	<b>\$ -</b>
<b>FUNDING SOURCES</b>									
100 - General Fund	\$ 110,000				\$ 110,000	\$ -	\$ -	\$ -	\$ -
	-				-	-	-	-	-
	-				-	-	-	-	-
	-				-	-	-	-	-
	-				-	-	-	-	-

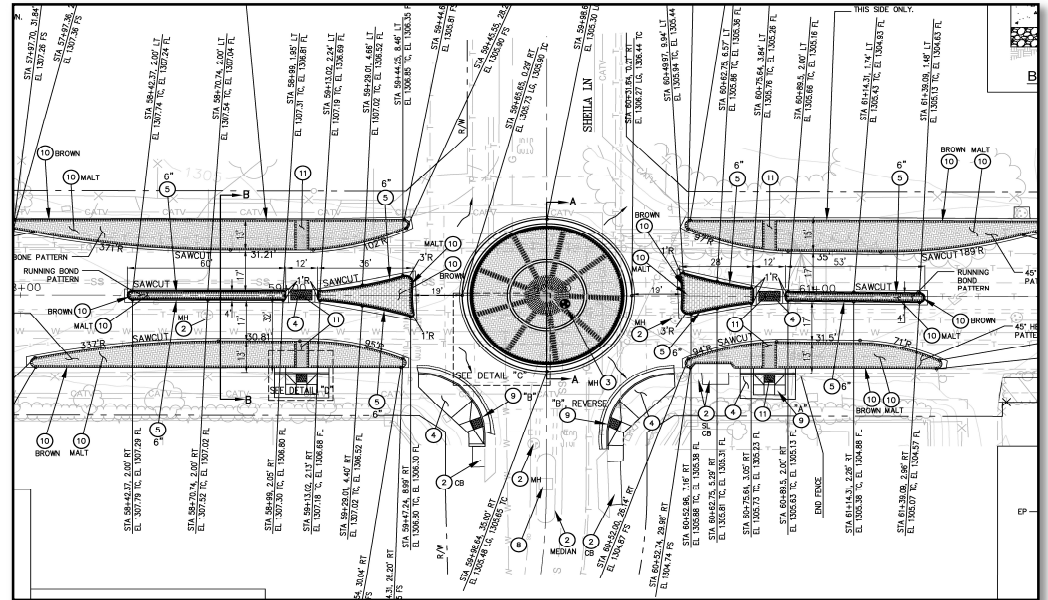
**CITY OF WILDOMAR**  
**CAPITAL IMPROVEMENT PROGRAM PROJECT DETAIL SHEET**  
FY 25/26 to FY 29/30

**PROJECT SUMMARY**

<b>PROJECT TITLE:</b>	Grand Ave./Sheila Ln. Roundabout	<b>CIP NO.:</b>	081	<b>DEPT:</b>	Public Works
<b>LOCATION:</b>	Grand Ave. and Sheila Ln. Intersection	<b>CATEGORY:</b>	Trans. (Roads)	<b>MANAGER:</b>	Unassigned
<b>INITIATED:</b>	FY 21/22				

**PROJECT DESCRIPTION AND EXHIBIT**

Construct a roundabout at Grand Ave. and Sheila Ln. in place of the existing 4-way stop control. Project design is complete. Project was previously solicited for bids in FY 17/18. The project is currently unfunded. Future funds proposed for Design/PS&E are to update the project plans to meet the latest design standards. The City will evaluate grant opportunities that may provide construction funding for this project.



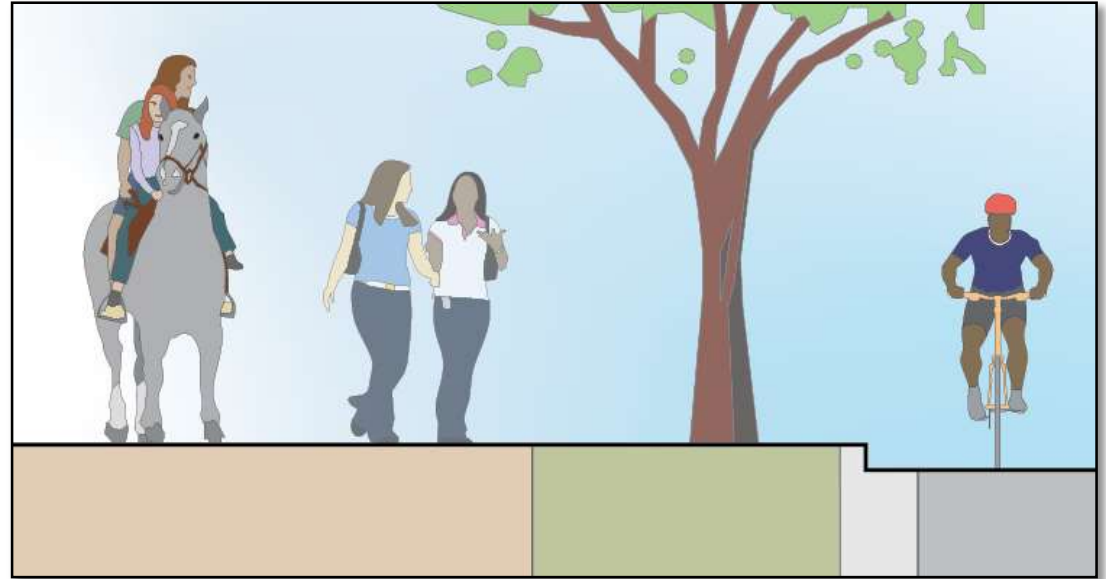
PROJECT PHASE/TASK	TOTAL 5-YEAR PROJECT	PROPOSED BUDGET		PROJECTED BUDGET				
		FY 25/26	FY 26/27	FY 27/28	FY 28/29	FY 29/30 & Future Years		
Project Dev/Environ.	\$ -	\$ -	\$ -	\$ -	\$ -	\$ -		
Design/PS&E	17,500	-	-	-	-	17,500		
Right-of-Way	-	-	-	-	-	-		
Construction	486,000	-	-	-	-	486,000		
Const Admin/Inspect.	48,600	-	-	-	-	48,600		
<b>Total Cost:</b>	<b>\$ 552,100</b>	<b>\$ -</b>	<b>\$ -</b>	<b>\$ -</b>	<b>\$ -</b>	<b>\$ 552,100</b>		
<b>FUNDING SOURCES</b>								
201 - Measure A	\$ 17,500	\$ -	\$ -	\$ -	\$ -	\$ 17,500		
Unfunded	534,600	-	-	-	-	534,600		
	-	-	-	-	-	-		
	-	-	-	-	-	-		
	-	-	-	-	-	-		

**CITY OF WILDOMAR**  
**CAPITAL IMPROVEMENT PROGRAM PROJECT DETAIL SHEET**  
FY 25/26 to FY 29/30

PROJECT SUMMARY					
PROJECT TITLE:	Palomar St./Bryant St. Trail	CIP NO.:	082	DEPT:	Public Works
LOCATION:	Palomar (Corydon to Mission Trl), Bryant (Palomar to Grand)	CATEGORY:	Trails	MANAGER:	Unassigned
INITIATED:	FY 21/22				

**PROJECT DESCRIPTION AND EXHIBIT**

Construct a multi-purpose trail along Palomar St. and Bryant St., to connect the Murrieta Creek Regional Trail from the City of Lake Elsinore into the City of Wildomar. Project design was previously completed in 2009/2010. Design revisions will be needed to update plans for compliance with current goals, policies, and standards.



PROJECT PHASE/TASK	TOTAL 5-YEAR PROJECT				PROPOSED BUDGET		PROJECTED BUDGET		
					FY 25/26	FY 26/27	FY 27/28	FY 28/29	FY 29/30 & Future Years
Project Dev/Environ.	\$ 15,000				\$ -	\$ -	\$ -	\$ -	\$ 15,000
Design/PS&E	60,000				-	-	-	-	60,000
Right-of-Way	-				-	-	-	-	-
Construction	600,000				-	-	-	-	600,000
Const Admin/Inspect.	75,000				-	-	-	-	75,000
<b>Total Cost:</b>	<b>\$ 750,000</b>				<b>\$ -</b>	<b>\$ -</b>	<b>\$ -</b>	<b>\$ -</b>	<b>\$ 750,000</b>
<b>FUNDING SOURCES</b>									
201 - Measure A	\$ 15,000				\$ -	\$ -	\$ -	\$ -	\$ 15,000
Unfunded	735,000				-	-	-	-	735,000
	-				-	-	-	-	-
	-				-	-	-	-	-
	-				-	-	-	-	-

**CITY OF WILDOMAR**  
**CAPITAL IMPROVEMENT PROGRAM PROJECT DETAIL SHEET**

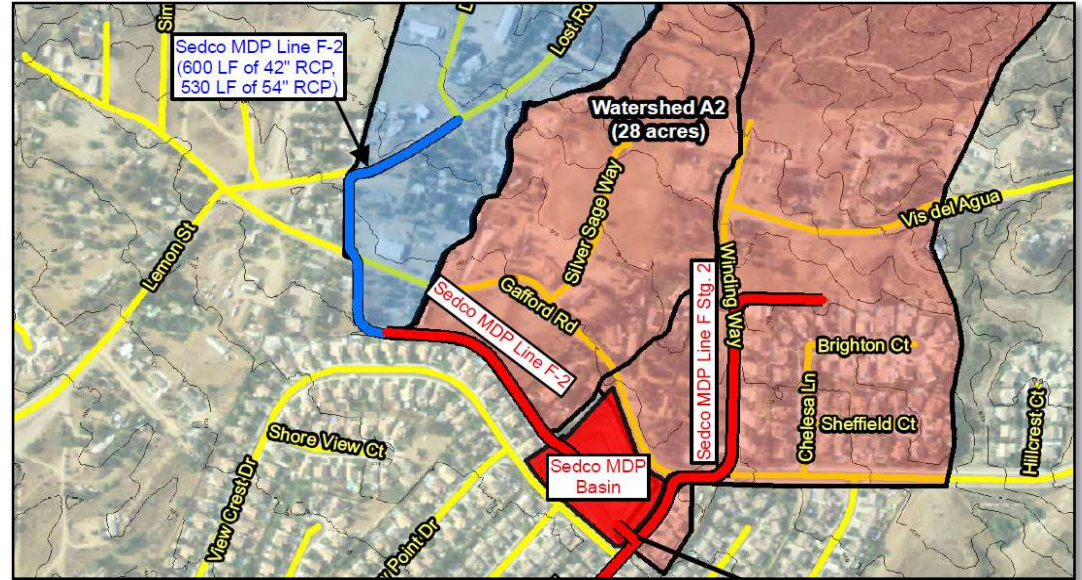
FY 25/26 to FY 29/30

**PROJECT SUMMARY**

<b>PROJECT TITLE:</b>	<b>Sedco MDP Line F-2 Storm Drain</b>	<b>CIP NO.:</b>	086	<b>DEPT:</b>	Public Works
<b>LOCATION:</b>	Lost Rd. to Gafford St. to Sedco MDP Basin on Great Falls Rd.	<b>CATEGORY:</b>	Drainage	<b>MANAGER:</b>	Unassigned
<b>INITIATED:</b>	FY 21/22				

**PROJECT DESCRIPTION AND EXHIBIT**

Construct an underground storm drain from the RCFC&WCD Sedco Basin to Lost Rd. This will be a City administered cooperative project with RCFC under a cooperative agreement. Project costs will be a 50/50 split.



PROJECT PHASE/TASK	TOTAL 5-YEAR PROJECT	PROPOSED BUDGET			PROJECTED BUDGET			
		FY 25/26	FY 26/27		FY 27/28	FY 28/29	FY 29/30 & Future Years	
Project Dev/Environ.	\$ 35,000	\$ 35,000	\$ -		\$ -	\$ -	\$ -	
Design/PS&E	95,000	50,000	45,000		-	-	-	
Right-of-Way	55,000	30,000	25,000		-	-	-	
Construction	760,000	-	-		380,000	380,000	-	
Const Admin/Inspect.	95,000	-	-		47,500	47,500	-	
<b>Total Cost:</b>	<b>\$ 1,040,000</b>	<b>\$ 115,000</b>	<b>\$ 70,000</b>		<b>\$ 427,500</b>	<b>\$ 427,500</b>	<b>\$ -</b>	
<b>FUNDING SOURCES</b>								
201 - Measure A	\$ 520,000	\$ 115,000	\$ 70,000		\$ 335,000	\$ -	\$ -	
502 - RCFC	520,000	-	-		92,500	427,500	-	
Unfunded	-	-	-		-	-	-	
	-	-	-		-	-	-	
	-	-	-		-	-	-	

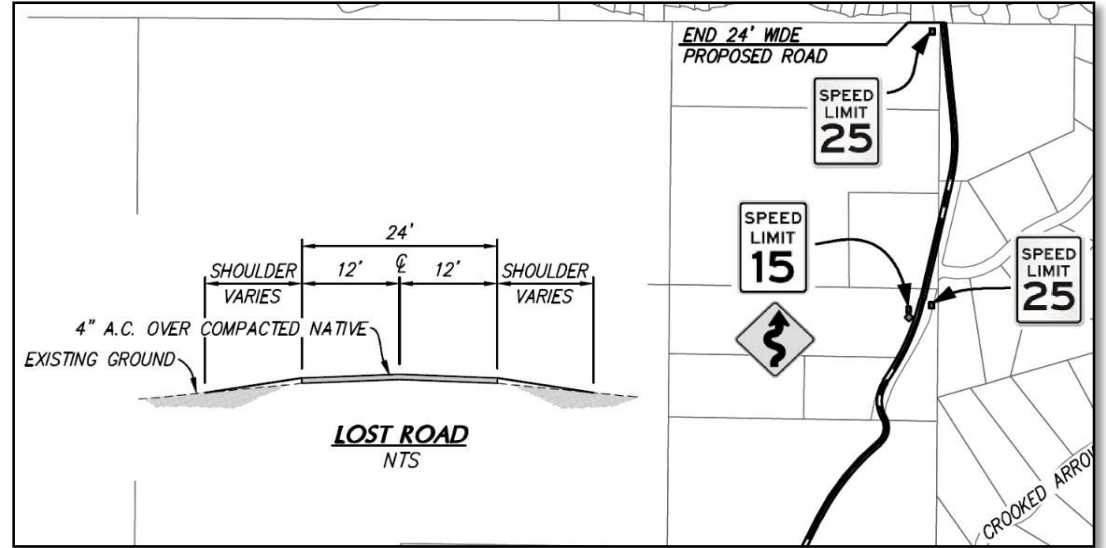
**CITY OF WILDOMAR**  
**CAPITAL IMPROVEMENT PROGRAM PROJECT DETAIL SHEET**  
FY 25/26 to FY 29/30

**PROJECT SUMMARY**

<b>PROJECT TITLE:</b>	<b>Lost Rd. Improvements</b>	<b>CIP NO.:</b>	087	<b>DEPT:</b>	Public Works
<b>LOCATION:</b>	Lost Rd. from Lemon St. to North City Limits	<b>CATEGORY:</b>	Trans. (Roads)	<b>MANAGER:</b>	Unassigned
<b>INITIATED:</b>	FY 21/22				

**PROJECT DESCRIPTION AND EXHIBIT**

This project plans to evaluate possible project scope, preliminary engineer's estimate, and potential funding sources to provide a level of improvement to Lost Rd. with asphalt paving. Other likely improvements would include drainage and safety improvements.



PROJECT PHASE/TASK	TOTAL 5-YEAR PROJECT				PROPOSED BUDGET		PROJECTED BUDGET		
					FY 25/26	FY 26/27	FY 27/28	FY 28/29	FY 29/30 & Future Years
Project Dev/Environ.	\$ 15,000				\$ -	\$ -	\$ -	\$ -	\$ 15,000
Design/PS&E	150,000				-	-	-	-	150,000
Right-of-Way	-				-	-	-	-	-
Construction	1,000,000				-	-	-	-	1,000,000
Const Admin/Inspect.	100,000				-	-	-	-	100,000
<b>Total Cost:</b>	<b>\$ 1,265,000</b>				<b>\$ -</b>	<b>\$ -</b>	<b>\$ -</b>	<b>\$ -</b>	<b>\$ 1,265,000</b>
<b>FUNDING SOURCES</b>									
201 - Measure A	\$ 15,000				\$ -	\$ -	\$ -	\$ -	\$ 15,000
Unfunded	1,250,000				-	-	-	-	1,250,000
	-				-	-	-	-	-
	-				-	-	-	-	-
	-				-	-	-	-	-

**CITY OF WILDOMAR**  
**CAPITAL IMPROVEMENT PROGRAM PROJECT DETAIL SHEET**

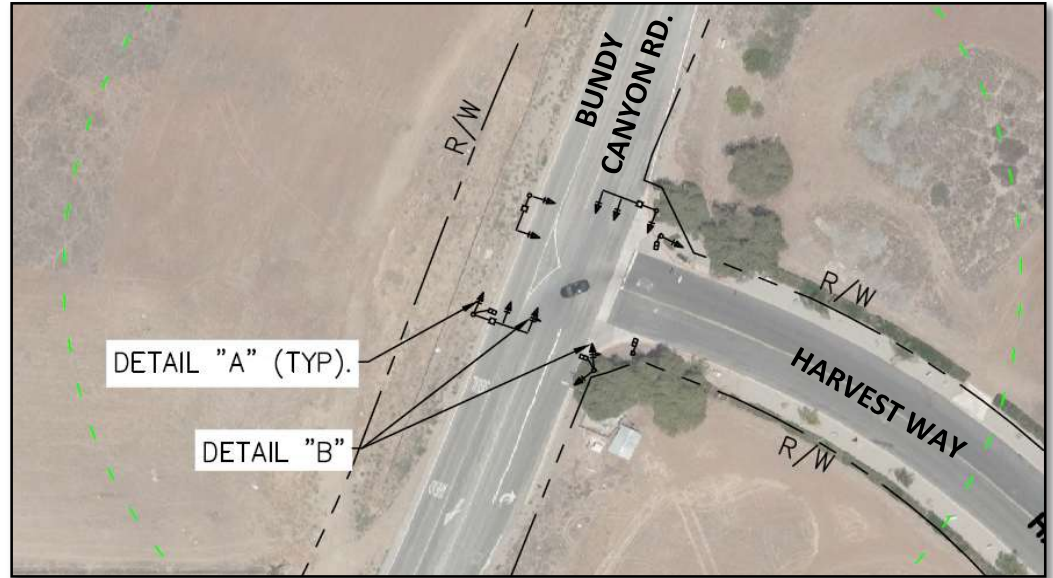
FY 25/26 to FY 29/30

**PROJECT SUMMARY**

<b>PROJECT TITLE:</b>	Harvest Way East/Bundy Canyon Rd. Traffic Signal	<b>CIP NO.:</b>	088	<b>DEPT:</b>	Public Works
<b>LOCATION:</b>	Harvest Way East and Bundy Canyon Rd. Intersection	<b>CATEGORY:</b>	Trans. (Signals)	<b>MANAGER:</b>	Jason Farag
<b>INITIATED:</b>	FY 21/22				

**PROJECT DESCRIPTION AND EXHIBIT**

Install a new traffic signal and appurtenant street improvements including safety lighting, crosswalks, and pedestrian countdown heads. Project is also part of larger improvements along Bundy Canyon Rd. from The Farm Rd. to Cottonwood Canyon Rd./Sunset Ave. The City has secured Highway Safety Improvement Project (HSIP) grant funding for the design and construction of the signal, however coordination with the adjacent developer and the schedule for improvements to Bundy Canyon Rd. Segment 3 (CIP 026-3) will be necessary.



PROJECT PHASE/TASK	TOTAL 5- YEAR PROJECT				PROPOSED BUDGET		PROJECTED BUDGET		
					FY 25/26	FY 26/27	FY 27/28	FY 28/29	FY 29/30 & Future Years
Project Dev/Environ.	\$ -				\$ -	\$ -	\$ -	\$ -	\$ -
Design/PS&E	-				-	-	-	-	-
Right-of-Way	-				-	-	-	-	-
Construction	880,000				880,000	-	-	-	-
Const Admin/Inspect.	100,000				100,000	-	-	-	-
<b>Total Cost:</b>	<b>\$ 980,000</b>				<b>\$ 980,000</b>	<b>\$ -</b>	<b>\$ -</b>	<b>\$ -</b>	<b>\$ -</b>
<b>FUNDING SOURCES</b>									
506 - HSIP	\$ 272,900				\$ 272,900	\$ -	\$ -	\$ -	\$ -
201 - Measure A	207,100				207,100	-	-	-	-
510 - Bond Proceeds	500,000				500,000	-	-	-	-
	-				-	-	-	-	-
	-				-	-	-	-	-

**CITY OF WILDOMAR**  
**CAPITAL IMPROVEMENT PROGRAM PROJECT DETAIL SHEET**  
FY 25/26 to FY 29/30

**PROJECT SUMMARY**

<b>PROJECT TITLE:</b>	Traffic Signal Retrofits and Upgrades	<b>CIP NO.:</b>	089	<b>DEPT:</b>	Public Works
<b>LOCATION:</b>	Various Locations Citywide	<b>CATEGORY:</b>	Trans. (Signals)	<b>MANAGER:</b>	Cameron Luna
<b>INITIATED:</b>	FY 21/22				

**PROJECT DESCRIPTION AND EXHIBIT**

Replace existing vehicle heads with LED vehicle heads with retro-reflective backing plates, provide advanced dilemma zone detection, and add a protected left-turn phase at two intersections.



PROJECT PHASE/TASK	TOTAL 5-YEAR PROJECT				PROPOSED BUDGET		PROJECTED BUDGET		
					FY 25/26	FY 26/27	FY 27/28	FY 28/29	FY 29/30 & Future Years
Project Dev/Environ.	\$ -				\$ -	\$ -	\$ -	\$ -	\$ -
Design/PS&E	-				-	-	-	-	-
Right-of-Way	-				-	-	-	-	-
Construction	520,000				520,000	-	-	-	-
Const Admin/Inspect.	50,000				50,000	-	-	-	-
<b>Total Cost:</b>	<b>\$ 570,000</b>				<b>\$ 570,000</b>	<b>\$ -</b>	<b>\$ -</b>	<b>\$ -</b>	<b>\$ -</b>
<b>FUNDING SOURCES</b>									
506 - HSIP	\$ 375,200				\$ 375,200	\$ -	\$ -	\$ -	\$ -
201 - Measure A	194,800				194,800	-	-	-	-
	-				-	-	-	-	-
	-				-	-	-	-	-
	-				-	-	-	-	-

**CITY OF WILDOMAR**  
**CAPITAL IMPROVEMENT PROGRAM PROJECT DETAIL SHEET**

FY 25/26 to FY 29/30

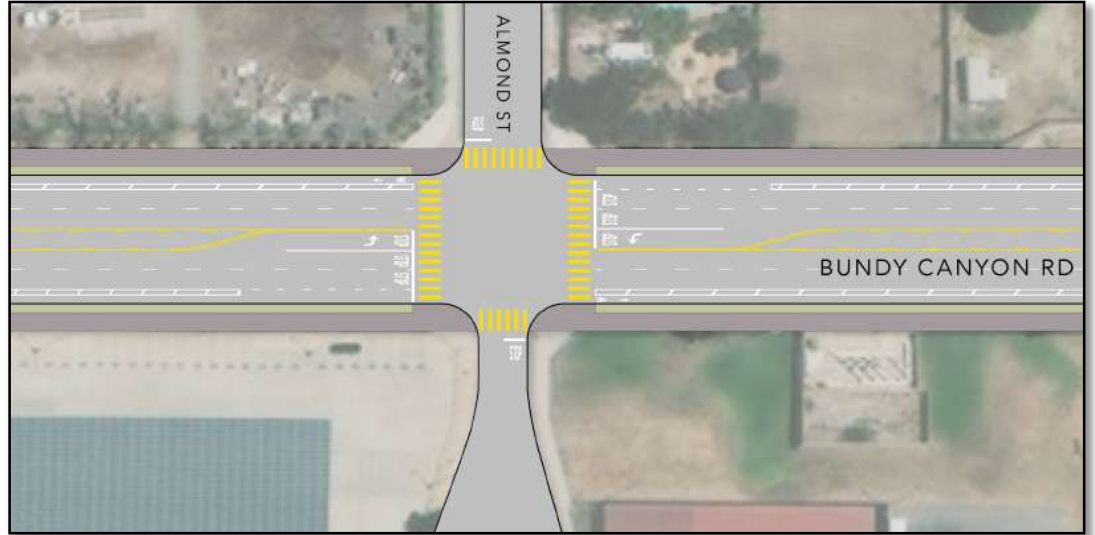
**PROJECT SUMMARY**

<b>PROJECT TITLE:</b>	<b>Bundy Canyon Rd. West - Widening &amp; ATP Improvements</b>	<b>CIP NO.:</b>	090	<b>DEPT:</b>	Public Works
<b>LOCATION:</b>	Bundy Canyon Rd. (Mission Trail to Almond St.)	<b>CATEGORY:</b>	Trans. (Roads)	<b>MANAGER:</b>	Unassigned
<b>INITIATED:</b>	FY 21/22				

**PROJECT DESCRIPTION AND EXHIBIT**

This project proposes to widen Bundy Canyon Rd. west of the I-15 from two lanes to four lanes, and to construct bike lanes, sidewalks, and traffic signals at Orchard St. and Almond St. This segment of Bundy Canyon Rd. is a high priority bicycle project in the Wildomar Mobility Plan and is a direct route to Elsinore High School making it an important project for students.

*Note: TUMF Funds shown below in the "Projected Budget" columns are based on Total Maximum TUMF Share available for this project. TUMF funds are allocated by WRCOG on an annual basis and not all TUMF funds shown below in the "Project Budget" columns have been allocated. If necessary TUMF funds are not allocated in future fiscal years, the City will amend the project budget and schedule accordingly.*



PROJECT PHASE/TASK	TOTAL 5- YEAR PROJECT				PROPOSED BUDGET		PROJECTED BUDGET		
					FY 25/26	FY 26/27	FY 27/28	FY 28/29	FY 29/30 & Future Years
Project Dev/Environ.	\$ 150,000				\$ 75,000	\$ 75,000	\$ -	\$ -	\$ -
Design/PS&E	630,000				250,000	250,000	130,000	-	-
Right-of-Way	460,000				100,000	300,000	60,000	-	-
Construction	9,020,000				-	-	-	9,020,000	-
Const Admin/Inspect.	770,000				-	-	-	770,000	-
<b>Total Cost:</b>	<b>\$ 11,030,000</b>				<b>\$ 425,000</b>	<b>\$ 625,000</b>	<b>\$ 190,000</b>	<b>\$ 9,790,000</b>	<b>\$ -</b>
<b>FUNDING SOURCES</b>									
503 - TUMF	\$ 9,704,000				\$ 425,000	\$ 625,000	\$ 190,000	\$ 8,464,000	\$ -
450 - DIF Signals	654,000				-	-	-	654,000	-
440 - DIF Roads	18,926				-	-	-	18,926	-
507 - Misc. State Fund	349,600				-	-	-	349,600	-
Unfunded	303,474				-	-	-	303,474	-

**CITY OF WILDOMAR**  
**CAPITAL IMPROVEMENT PROGRAM PROJECT DETAIL SHEET**

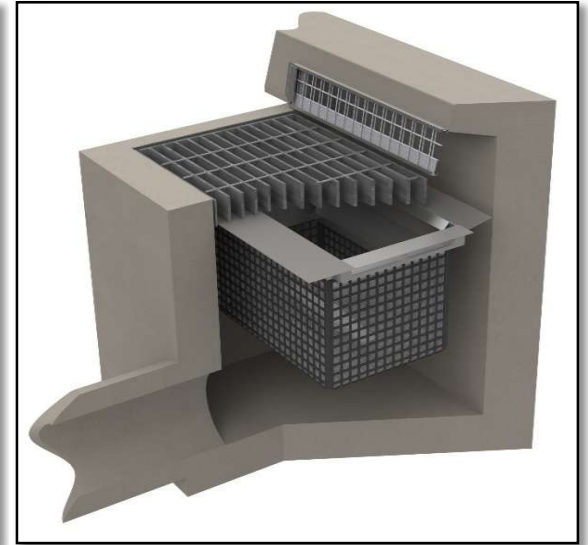
FY 25/26 to FY 29/30

**PROJECT SUMMARY**

<b>PROJECT TITLE:</b>	<b>Catch Basin Filter Retrofit Project</b>	<b>CIP NO.:</b>	091	<b>DEPT:</b>	Public Works
<b>LOCATION:</b>	Various LLMD Zones Citywide	<b>CATEGORY:</b>	Drainage	<b>MANAGER:</b>	Cameron Luna
<b>INITIATED:</b>	FY 21/22				

**PROJECT DESCRIPTION AND EXHIBIT**

This project will upgrade existing catch basin filters. Several storm drain inlets/catch basins in LLMD zones contain filters which collect trash and remove pollutants from the water which enters the storm drain system, before the water reaches downstream water bodies such as the Murrieta Creek and Lake Elsinore. The filter upgrade will include installation of newer filters that meet current water quality requirements and remove trash and other pollutants with a higher efficiency.



PROJECT PHASE/TASK	TOTAL 5-YEAR PROJECT				PROPOSED BUDGET		PROJECTED BUDGET		
					FY 25/26	FY 26/27	FY 27/28	FY 28/29	FY 29/30 & Future Years
Project Dev/Environ.	\$ -				\$ -	\$ -	\$ -	\$ -	\$ -
Design/PS&E	-				-	-	-	-	-
Right-of-Way	-				-	-	-	-	-
Construction	246,380				246,380	-	-	-	-
Const Admin/Inspect.	25,000				25,000	-	-	-	-
<b>Total Cost:</b>	<b>\$ 271,380</b>				<b>\$ 271,380</b>	<b>\$ -</b>	<b>\$ -</b>	<b>\$ -</b>	<b>\$ -</b>
<b>FUNDING SOURCES</b>									
601 - LLMD Zone 52	\$ 155,313				\$ 155,313	\$ -	\$ -	\$ -	\$ -
601 - LLMD Zone 59	24,240				24,240	-	-	-	-
601 - LLMD Zone 62	69,370				69,370	-	-	-	-
601 - LLMD Zone 67	22,457				22,457	-	-	-	-
	-				-	-	-	-	-

**CITY OF WILDOMAR**  
**CAPITAL IMPROVEMENT PROGRAM PROJECT DETAIL SHEET**

FY 25/26 to FY 29/30

**PROJECT SUMMARY**

<b>PROJECT TITLE:</b>	<b>Bundy Canyon Rd. Sidewalk and Bike Lanes</b>	<b>CIP NO.:</b>	092	<b>DEPT:</b>	Public Works
<b>LOCATION:</b>	Bundy Canyon Rd. from Cherry St. to Canyon Ranch Rd.	<b>CATEGORY:</b>	Trails	<b>MANAGER:</b>	Cameron Luna
<b>INITIATED:</b>	FY 21/22				

**PROJECT DESCRIPTION AND EXHIBIT**

This project will construct missing sidewalk and install Class II bike lanes between Elsinore High School (Almond St.) and Canyon Ranch Rd./Walnut Creek Rd. to the east. Funding for the project includes RCTC SB 821 Grant Funds.



PROJECT PHASE/TASK	TOTAL 5-YEAR PROJECT	PROPOSED BUDGET			PROJECTED BUDGET			
			FY 25/26	FY 26/27	FY 27/28	FY 28/29	FY 29/30 & Future Years	
Project Dev/Environ.	\$ 25,000		\$ 25,000	\$ -	\$ -	\$ -	\$ -	\$ -
Design/PS&E	150,000		150,000	-	-	-	-	-
Right-of-Way	50,000		50,000	-	-	-	-	-
Construction	675,000		-	675,000	-	-	-	-
Const Admin/Inspect.	75,000		-	75,000	-	-	-	-
<b>Total Cost:</b>	<b>\$ 975,000</b>		<b>\$ 225,000</b>	<b>\$ 750,000</b>	<b>\$ -</b>	<b>\$ -</b>	<b>\$ -</b>	
<b>FUNDING SOURCES</b>								
202 - TDA Fund	\$ 381,325		\$ -	\$ 381,325	\$ -	\$ -	\$ -	\$ -
503 - TUMF	424,925		225,000	199,925	-	-	-	-
201 - Measure A	168,750		-	168,750	-	-	-	-
	-		-	-	-	-	-	-
	-		-	-	-	-	-	-

**CITY OF WILDOMAR**  
**CAPITAL IMPROVEMENT PROGRAM PROJECT DETAIL SHEET**

FY 25/26 to FY 29/30

**PROJECT SUMMARY**

<b>PROJECT TITLE:</b>	Wildomar Fire Station #2 (East of I-15)	<b>CIP NO.:</b>	093	<b>DEPT:</b>	Fire
<b>LOCATION:</b>	East of I-15	<b>CATEGORY:</b>	Buildings	<b>MANAGER:</b>	Unassigned
<b>INITIATED:</b>	FY 21/22				

**PROJECT DESCRIPTION AND EXHIBIT**

This project will evaluate the need for and the most appropriate location for a new Fire Station. The Project Development/Environmental phase includes preparing a project scope, advertising an RFP for consultant services to perform the evaluation, hiring a consultant, and completing the evaluation through the selected consultant.



PROJECT PHASE/TASK	TOTAL 5-YEAR PROJECT				PROPOSED BUDGET		PROJECTED BUDGET		
					FY 25/26	FY 26/27	FY 27/28	FY 28/29	FY 29/30 & Future Years
Project Dev/Environ.	\$ 100,000				\$ -	\$ -	\$ -	\$ -	\$ 100,000
Design/PS&E	-				-	-	-	-	-
Right-of-Way	-				-	-	-	-	-
Construction	-				-	-	-	-	-
Const Admin/Inspect.	-				-	-	-	-	-
<b>Total Cost:</b>	<b>\$ 100,000</b>				<b>\$ -</b>	<b>\$ -</b>	<b>\$ -</b>	<b>\$ -</b>	<b>\$ 100,000</b>
<b>FUNDING SOURCES</b>									
Unfunded	\$ 100,000				\$ -	\$ -	\$ -	\$ -	\$ 100,000
	-				-	-	-	-	-
	-				-	-	-	-	-
	-				-	-	-	-	-
	-				-	-	-	-	-

**CITY OF WILDOMAR**  
**CAPITAL IMPROVEMENT PROGRAM PROJECT DETAIL SHEET**  
FY 25/26 to FY 29/30

**PROJECT SUMMARY**

<b>PROJECT TITLE:</b>	<b>RCFC Line G Storm Drain (Stages 1 and 2)</b>	<b>CIP NO.:</b>	094	<b>DEPT:</b>	Public Works
<b>LOCATION:</b>	Orange St. to Corydon St.	<b>CATEGORY:</b>	Drainage	<b>MANAGER:</b>	Unassigned
<b>INITIATED:</b>	FY 21/22				

**PROJECT DESCRIPTION AND EXHIBIT**

This Flood Control-led project will complete the Line G system. Once the Line G system is complete, it will provide flood protection to the community southwest of Bundy Canyon Road and Interstate 15, as well as resolve long standing flooding issues at the Elsinore High School. The Stage 2 (to be built second) project will intercept storm flows reaching Orange Street from the east and convey those flows westerly along Canyon Drive to the Stage 1 (to be built first) facility east of Mission Trail. Stage 1 will be constructed as an open channel and Stage 2 will be constructed as an underground storm drain facility.

Included in the FY 24/25 budget are some funds to allow staff to analyze the existing drainage conditions at Almond St. south of Elsinore High School to determine if there are any interim improvements or efforts that can help reduce the amount of roadway flooding that occurs.



PROJECT PHASE/TASK	TOTAL 5- YEAR PROJECT				PROPOSED BUDGET		PROJECTED BUDGET		
					FY 25/26	FY 26/27	FY 27/28	FY 28/29	FY 29/30 & Future Years
Project Dev/Environ.	\$ 10,000				\$ 10,000	\$ -	\$ -	\$ -	\$ -
Design/PS&E	-				-	-	-	-	-
Right-of-Way	-				-	-	-	-	-
Construction	22,235,000				-	-	-	-	22,235,000
Const Admin/Inspect.	-				-	-	-	-	-
<b>Total Cost:</b>	<b>\$ 22,245,000</b>				<b>\$ 10,000</b>	<b>\$ -</b>	<b>\$ -</b>	<b>\$ -</b>	<b>\$ 22,235,000</b>
<b>FUNDING SOURCES</b>									
502 - RCFC	\$ 7,384,000				\$ -	\$ -	\$ -	\$ -	\$ 7,384,000
Unfunded	14,851,000				-	-	-	-	14,851,000
201 - Measure A	10,000				10,000	-	-	-	-
	-				-	-	-	-	-
	-				-	-	-	-	-

**CITY OF WILDOMAR**  
**CAPITAL IMPROVEMENT PROGRAM PROJECT DETAIL SHEET**

FY 25/26 to FY 29/30

**PROJECT SUMMARY**

<b>PROJECT TITLE:</b>	<b>RCFC Murrieta Creek/Wildomar Channel ROW Impvts.</b>	<b>CIP NO.:</b>	095	<b>DEPT:</b>	Public Works
<b>LOCATION:</b>	McVicar St. to Southern City Limits with Murrieta	<b>CATEGORY:</b>	Drainage	<b>MANAGER:</b>	Unassigned
<b>INITIATED:</b>	FY 21/22				

**PROJECT DESCRIPTION AND EXHIBIT**

This is a Flood Control led project to acquire right of way (ROW) within Murrieta Creek floodplain from the City's southerly boundary with Murrieta to McVicar Street. The acquisition of the right of way will be in lieu of constructing the Murrieta Creek Channel. The area will remain a natural conveyance system. Flood Control Area Drainage Plan funds will be used when they become available to acquire the ROW and make necessary improvements to the natural conveyance system.



PROJECT PHASE/TASK	TOTAL 5- YEAR PROJECT				PROPOSED BUDGET		PROJECTED BUDGET		
					FY 25/26	FY 26/27	FY 27/28	FY 28/29	FY 29/30 & Future Years
Project Dev/Environ.	\$ -				\$ -	\$ -	\$ -	\$ -	\$ -
Design/PS&E	-				-	-	-	-	-
Right-of-Way	390,156				-	-	-	-	390,156
Construction	-				-	-	-	-	-
Const Admin/Inspect.	-				-	-	-	-	-
<b>Total Cost:</b>	<b>\$ 390,156</b>				<b>\$ -</b>	<b>\$ -</b>	<b>\$ -</b>	<b>\$ -</b>	<b>\$ 390,156</b>
<b>FUNDING SOURCES</b>									
502 - RCFC	\$ 390,156				\$ -	\$ -	\$ -	\$ -	\$ 390,156
	-				-	-	-	-	-
	-				-	-	-	-	-
	-				-	-	-	-	-
	-				-	-	-	-	-

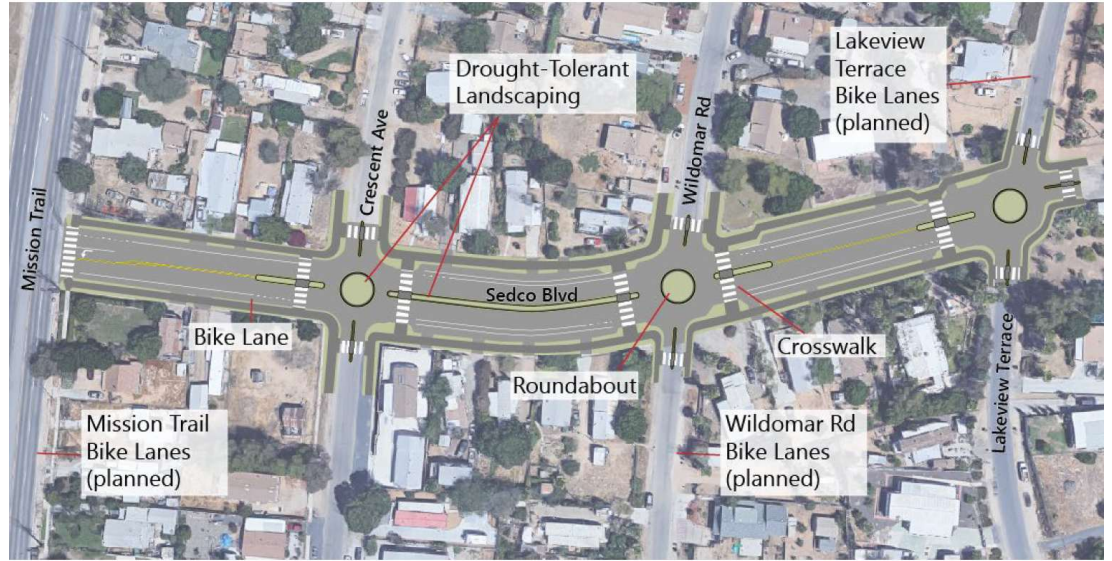
**CITY OF WILDOMAR**  
**CAPITAL IMPROVEMENT PROGRAM PROJECT DETAIL SHEET**  
FY 25/26 to FY 29/30

**PROJECT SUMMARY**

<b>PROJECT TITLE:</b>	<b>Sedco Boulevard Roadway Safety Improvements Project</b>	<b>CIP NO.:</b>	096	<b>DEPT:</b>	Public Works
<b>LOCATION:</b>	Sedco Blvd between Mission Trail and Lakeview Terrace	<b>CATEGORY:</b>	Trans. (Roads)	<b>MANAGER:</b>	Ninette Eva
<b>INITIATED:</b>	FY 23/24				

**PROJECT DESCRIPTION AND EXHIBIT**

The proposed project will add Class II bike lanes, crosswalks, and roundabouts along a 0.19-mile segment of Sedco Boulevard between Mission Trail and Lakeview Terrace. The project site is located in the Sedco Hills neighborhood of the City. The Sedco Boulevard Roadway Safety Improvements project is intended to increase the usage of alternative travel modes. The project is planned to include landscaping in the medians and centers of roundabouts. The project seeks to increase mobility and expand connectivity by serving as a vital link in the City of Wildomar's proposed Active Transportation network. Included in the project is the design and construction of the RCFC Sedco MDP Line C storm drain, which is located in Sedco Blvd.



PROJECT PHASE/TASK	TOTAL 5- YEAR PROJECT				PROPOSED BUDGET		PROJECTED BUDGET		
					FY 25/26	FY 26/27	FY 27/28	FY 28/29	FY 29/30 & Future Years
Project Dev/Environ.	\$ 176,000				\$ 150,000	\$ -	\$ 26,000	\$ -	\$ -
Design/PS&E	464,000				164,000	222,000	78,000	-	-
Right-of-Way	11,000				-	11,000	-	-	-
Construction	3,405,000				-	-	1,022,000	2,383,000	-
Const Admin/Inspect.	150,000				-	-	45,000	105,000	-
<b>Total Cost:</b>	<b>\$ 4,206,000</b>				<b>\$ 314,000</b>	<b>\$ 233,000</b>	<b>\$ 1,171,000</b>	<b>\$ 2,488,000</b>	<b>\$ -</b>
<b>FUNDING SOURCES</b>									
201 - Measure A	\$ 282,000				\$ 50,000	\$ 65,000	\$ 62,000	\$ 105,000	\$ -
120 - Measure AA	552,314				-	-	165,694	386,620	-
509 - Federal Grants	2,218,531				150,000	50,000	618,531	1,400,000	-
451 - DIF Drainage	505,142				114,000	118,000	273,142	-	-
502 - RCFC	648,013				-	-	51,633	596,380	-

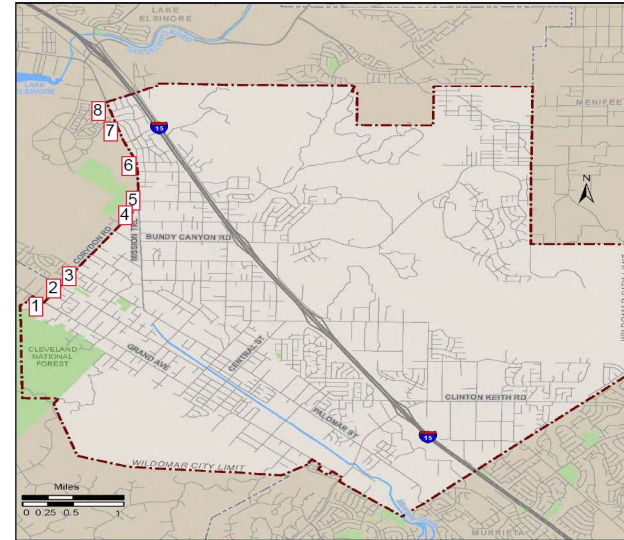
**CITY OF WILDOMAR**  
**CAPITAL IMPROVEMENT PROGRAM PROJECT DETAIL SHEET**  
FY 25/26 to FY 29/30

**PROJECT SUMMARY**

<b>PROJECT TITLE:</b>	<b>Pedestrian Crosswalk Enhancement Project</b>	<b>CIP NO.:</b>	097-1	<b>DEPT:</b>	Public Works
<b>LOCATION:</b>	Corydon Road and Mission Trail Intersections	<b>CATEGORY:</b>	Trans. (Signals)	<b>MANAGER:</b>	Cameron Luna
<b>INITIATED:</b>	FY 23/24				

**PROJECT DESCRIPTION AND EXHIBIT**

This project will Install pedestrian countdown signal heads and other pedestrian crosswalk enhancements including accessible pedestrian signals at signalized intersections, high visibility crosswalks, and pedestrian curb ramps.



- LOCATIONS:**
1. Corydon Rd @ Grand Ave
  2. Corydon Rd @ Union St
  3. Corydon Rd @ Palomar St
  4. Corydon Rd @ Mission Trl
  5. Mission Trl @ Lemon St
  6. Mission Trl @ Olive St
  7. Mission Trl @ Elberta Ave
  8. Mission Trl @ Malaga Rd



PROJECT PHASE/TASK	TOTAL 5- YEAR PROJECT				PROPOSED BUDGET		PROJECTED BUDGET		
					FY 25/26	FY 26/27	FY 27/28	FY 28/29	FY 29/30 & Future Years
Project Dev/Environ.	\$ -				\$ -	\$ -	\$ -	\$ -	\$ -
Design/PS&E	40,000				40,000	-	-	-	-
Right-of-Way	-				-	-	-	-	-
Construction	176,100				-	176,100	-	-	-
Const Admin/Inspect.	35,000				-	35,000	-	-	-
<b>Total Cost:</b>	<b>\$ 251,100</b>				<b>\$ 40,000</b>	<b>\$ 211,100</b>	<b>\$ -</b>	<b>\$ -</b>	<b>\$ -</b>
<b>FUNDING SOURCES</b>									
201 - Measure A	\$ 92,610				\$ 40,000	\$ 52,610	\$ -	\$ -	\$ -
506 - HSIP	158,490				-	158,490	-	-	-
	-				-	-	-	-	-
	-				-	-	-	-	-
	-				-	-	-	-	-

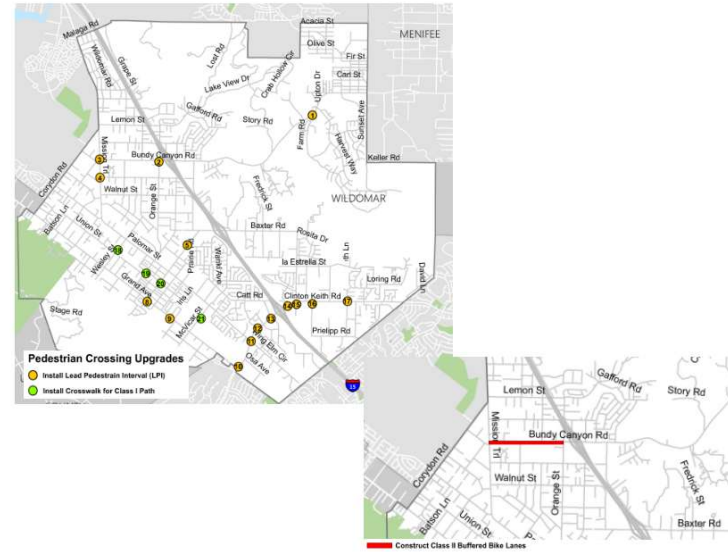
**CITY OF WILDOMAR**  
**CAPITAL IMPROVEMENT PROGRAM PROJECT DETAIL SHEET**  
 FY 25/26 to FY 29/30

**PROJECT SUMMARY**

<b>PROJECT TITLE:</b>	<b>Pedestrian Crossing Enhancements (HSIP)</b>	<b>CIP NO.:</b>	097-2	<b>DEPT:</b>	Public Works
<b>LOCATION:</b>	Various Locations	<b>CATEGORY:</b>	Trans. (Signals)	<b>MANAGER:</b>	Unassigned
<b>INITIATED:</b>	FY 24/25				

**PROJECT DESCRIPTION AND EXHIBIT**

This project will install pedestrian interval (LPI), audible push buttons and enhanced crosswalk striping at signalized intersections; install regular rapid flashing beacons (RRFBs) and mid block crossings for Class I trail. Project also includes Class II buffered bike lanes on Bundy Canyon Road.



PROJECT PHASE/TASK	TOTAL 5-YEAR PROJECT	PROPOSED BUDGET			PROJECTED BUDGET			
		FY 25/26	FY 26/27		FY 27/28	FY 28/29	FY 29/30 & Future Years	
Project Dev/Environ.	\$ -	\$ -	\$ -		\$ -	\$ -	\$ -	
Design/PS&E	25,000	25,000	-		-	-	-	
Right-of-Way	-	-	-		-	-	-	
Construction	350,000	-	350,000		-	-	-	
Const Admin/Inspect.	20,000	-	20,000		-	-	-	
<b>Total Cost:</b>	<b>\$ 395,000</b>	<b>\$ 25,000</b>	<b>\$ 370,000</b>		<b>\$ -</b>	<b>\$ -</b>	<b>\$ -</b>	
<b>FUNDING SOURCES</b>								
120 - Measure AA	\$ -	\$ -	\$ -		\$ -	\$ -	\$ -	
201 - Measure A	107,200	25,000	82,200		-	-	-	
506 - HSIP	287,800	-	287,800		-	-	-	
	-	-	-		-	-	-	
	-	-	-		-	-	-	

**CITY OF WILDOMAR**  
**CAPITAL IMPROVEMENT PROGRAM PROJECT DETAIL SHEET**  
FY 25/26 to FY 29/30

**PROJECT SUMMARY**

<b>PROJECT TITLE:</b>	<b>Field Operations Center/Corporation Yard</b>	<b>CIP NO.:</b>	098	<b>DEPT:</b>	Public Works
<b>LOCATION:</b>	Between Wildomar Trail/Gruwell St. (APN 376-060-028)	<b>CATEGORY:</b>	Buildings	<b>MANAGER:</b>	Unassigned
<b>INITIATED:</b>	FY 23/24				

**PROJECT DESCRIPTION AND EXHIBIT**

As the City transitions from contract maintenance services to in-house/City employee maintenance crews, an interim field operations center will be necessary for staff and maintenance equipment/materials. This project will design and construct an interim field operations center on City property located between Wildomar Trail and the Wildomar Cemetery, just east of Palomar St. (known as "Lot 5").



PROJECT PHASE/TASK	TOTAL 5- YEAR PROJECT				PROPOSED BUDGET		PROJECTED BUDGET		
					FY 25/26	FY 26/27	FY 27/28	FY 28/29	FY 29/30 & Future Years
Project Dev/Environ.	\$ 100,000				\$ 25,000	\$ 25,000	\$ 50,000	\$ -	\$ -
Design/PS&E	250,000				50,000	100,000	100,000	-	-
Right-of-Way	-				-	-	-	-	-
Construction	2,590,000				-	400,000	-	-	2,190,000
Const Admin/Inspect.	300,000				-	50,000	-	-	250,000
<b>Total Cost:</b>	<b>\$ 3,240,000</b>				<b>\$ 75,000</b>	<b>\$ 575,000</b>	<b>\$ 150,000</b>	<b>\$ -</b>	<b>\$ 2,440,000</b>
<b>FUNDING SOURCES</b>									
130 - Field Ops Cente	\$ 1,893,000				\$ 75,000	\$ 575,000	\$ 150,000	\$ -	\$ 1,093,000
423 - DIF Corp. Yard	-				-	-	-	-	-
Unfunded	1,347,000				-	-	-	-	1,347,000
	-				-	-	-	-	-
	-				-	-	-	-	-

**CITY OF WILDOMAR**  
**CAPITAL IMPROVEMENT PROGRAM PROJECT DETAIL SHEET**  
FY 25/26 to FY 29/30

**PROJECT SUMMARY**

<b>PROJECT TITLE:</b>	<b>20-Acre Passive Park</b>	<b>CIP NO.:</b>	099	<b>DEPT:</b>	Public Works
<b>LOCATION:</b>	Between Gierson Ave./Billie Ann Rd./Pasadena St./Palomar St.	<b>CATEGORY:</b>	Parks	<b>MANAGER:</b>	Cameron Luna
<b>INITIATED:</b>	FY 23/24				

**PROJECT DESCRIPTION AND EXHIBIT**

In FY 22/23, the City Council authorized the purchase of 20-acres of undeveloped property for use as a passive park. The park will be improved in multiple phases: An initial/preliminary phase will provide the basic amenities and improvements needed to comply with the Purchase and Sale Agreement for the park and to open the park to the public for access and use. Future phases will provide additional amenities to further enhance the park.



PROJECT PHASE/TASK	TOTAL 5-YEAR PROJECT	PROPOSED BUDGET			PROJECTED BUDGET			
		FY 25/26	FY 26/27		FY 27/28	FY 28/29	FY 29/30 & Future Years	
Project Dev/Environ.	\$ 516,320	\$ 135,000	\$ 381,320		\$ -	\$ -	\$ -	
Design/PS&E	200,000	200,000	-		-	-	-	
Right-of-Way	-	-	-		-	-	-	
Construction	10,415,000	415,000	3,500,000		6,500,000	-	-	
Const Admin/Inspect.	325,000	25,000	150,000		150,000	-	-	
<b>Total Cost:</b>	<b>\$ 11,456,320</b>	<b>\$ 775,000</b>	<b>\$ 4,031,320</b>		<b>\$ 6,650,000</b>	<b>\$ -</b>	<b>\$ -</b>	
<b>FUNDING SOURCES</b>								
	\$ -	\$ -	\$ -		\$ -	\$ -	\$ -	
461 - DIF Park Imp.	775,000	775,000	-		-	-	-	
Unfunded	10,681,320	-	4,031,320		6,650,000	-	-	
	-	-	-		-	-	-	
	-	-	-		-	-	-	

**CITY OF WILDOMAR**  
**CAPITAL IMPROVEMENT PROGRAM PROJECT DETAIL SHEET**

FY 25/26 to FY 29/30

PROJECT SUMMARY					
<b>PROJECT TITLE:</b>	Landscape Maintenance District Enhancements	<b>CIP NO.:</b>	100	<b>DEPT:</b>	Public Works
<b>LOCATION:</b>	Citywide (LLMDs, CFDs, CSAs)	<b>CATEGORY:</b>	Other	<b>MANAGER:</b>	Terri Abercrombie
<b>INITIATED:</b>	FY 23/24				

**PROJECT DESCRIPTION AND EXHIBIT**

This project will upgrade existing landscaping and irrigation in Landscape and Lighting Maintenance Districts (LLMDs), Community Facilities Districts (CFDs), and Community Services Areas (CSAs).



PROJECT PHASE/TASK	TOTAL 5-YEAR PROJECT				PROPOSED BUDGET		PROJECTED BUDGET		
					FY 25/26	FY 26/27	FY 27/28	FY 28/29	FY 29/30 & Future Years
Project Dev/Environ.	\$ -					\$ -	\$ -	\$ -	\$ -
Design/PS&E	161,000				161,000	-	-	-	-
Right-of-Way	-				-	-	-	-	-
Construction	55,000				55,000	TBD	-	-	-
Const Admin/Inspect.	152,000				152,000	-	-	-	-
<b>Total Cost:</b>	<b>\$ 368,000</b>				<b>\$ 368,000</b>	<b>\$ -</b>	<b>\$ -</b>	<b>\$ -</b>	<b>\$ -</b>
<b>FUNDING SOURCES</b>									
601 - LLMD Zone 3	\$ 214,108				\$ 214,108	\$ -	\$ -	\$ -	\$ -
601 - LLMD Zone 29	11,708				11,708	-	-	-	-
601 - LLMD Zone 30	25,108				25,108	-	-	-	-
601 - LLMD Zone 42	11,708				11,708	-	-	-	-
601 - LLMD Zone 51	11,708				11,708	-	-	-	-
601 - LLMD Zone 52	11,708				11,708	-	-	-	-
601 - LLMD Zone 67	11,708				11,708	-	-	-	-
601 - LLMD Zone 71	11,708				11,708	-	-	-	-
601 - LLMD Zone 181	11,708				11,708	-	-	-	-
606 - CFD Zone 1 and 2	11,708				11,708	-	-	-	-
606 - CFD Zone 3	11,708				11,708	-	-	-	-
606 - CFD Zone 5	11,708				11,708	-	-	-	-
603 - CSA 103	11,708				11,708	-	-	-	-
	-				-	-	-	-	-

**CITY OF WILDOMAR**  
**CAPITAL IMPROVEMENT PROGRAM PROJECT DETAIL SHEET**

FY 25/26 to FY 29/30

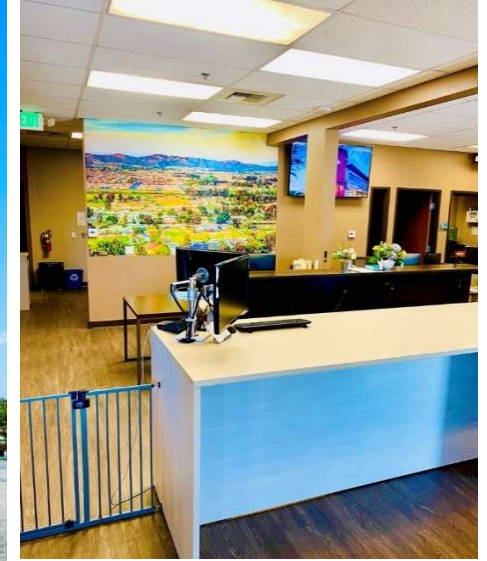
**PROJECT SUMMARY**

<b>PROJECT TITLE:</b>	<b>City Hall Renovations</b>	<b>CIP NO.:</b>	101	<b>DEPT:</b>	Comm. Svcs.
<b>LOCATION:</b>	23873 Clinton Keith Rd., Wildomar, CA 92595	<b>CATEGORY:</b>	Buildings	<b>MANAGER:</b>	Daniel Torres
<b>INITIATED:</b>	FY 24/25				

**PROJECT DESCRIPTION AND EXHIBIT**

The City will evaluate renovations to the City Hall building purchased in 2023. Renovations may include ADA improvements, wall framing to create new space for maintenance personnel, access modifications/improvements to the front lobby to improve customer access, carpet/furniture replacements, and energy efficiency upgrades (e.g., HVAC, lighting, windows, etc...).

Improvements will need to be prioritized based on priority and available budget.



PROJECT PHASE/TASK	TOTAL 5-YEAR PROJECT				PROPOSED BUDGET		PROJECTED BUDGET		
					FY 25/26	FY 26/27	FY 27/28	FY 28/29	FY 29/30 & Future Years
Project Dev/Environ.	\$ -				\$ -	\$ -	\$ -	\$ -	\$ -
Design/PS&E	-				-	-	-	-	-
Right-of-Way	-				-	-	-	-	-
Construction	75,000				75,000	-	-	-	-
Const Admin/Inspect.	-				-	-	-	-	-
<b>Total Cost:</b>	<b>\$ 75,000</b>				<b>\$ 75,000</b>	<b>\$ -</b>	<b>\$ -</b>	<b>\$ -</b>	<b>\$ -</b>
<b>FUNDING SOURCES</b>									
100 - General Fund	\$ -				\$ -	\$ -	\$ -	\$ -	\$ -
509 - Federal Grants	75,000				75,000	-	-	-	-
Unfunded	-				-	-	-	-	-
	-				-	-	-	-	-

**CITY OF WILDOMAR**  
**CAPITAL IMPROVEMENT PROGRAM PROJECT DETAIL SHEET**

FY 25/26 to FY 29/30

**PROJECT SUMMARY**

<b>PROJECT TITLE:</b>	Marna O'Brien Park Rubberized Play Surface	<b>CIP NO.:</b>	102	<b>DEPT:</b>	Comm. Svcs.
<b>LOCATION:</b>	Marna O'Brien Park	<b>CATEGORY:</b>	Parks	<b>MANAGER:</b>	Daniel Torres
<b>INITIATED:</b>	FY 24/25				

**PROJECT DESCRIPTION AND EXHIBIT**

This project includes the replacement of the existing mulch material at the Marna O'Brien Park playground with a rubberized play surface.



PROJECT PHASE/TASK	TOTAL 5-YEAR PROJECT				PROPOSED BUDGET		PROJECTED BUDGET		
					FY 25/26	FY 26/27	FY 27/28	FY 28/29	FY 29/30 & Future Years
Project Dev/Environ.	\$ -				\$ -	\$ -	\$ -	\$ -	\$ -
Design/PS&E	-				-	-	-	-	-
Right-of-Way	-				-	-	-	-	-
Construction	90,000				90,000	-	-	-	-
Const Admin/Inspect.	15,000				15,000	-	-	-	-
<b>Total Cost:</b>	<b>\$ 105,000</b>				<b>\$ 105,000</b>	<b>\$ -</b>	<b>\$ -</b>	<b>\$ -</b>	<b>\$ -</b>
<b>FUNDING SOURCES</b>									
461 - DIF Park Imp.	\$ 105,000				\$ 105,000	\$ -	\$ -	\$ -	\$ -
	-				-	-	-	-	-
	-				-	-	-	-	-
	-				-	-	-	-	-
	-				-	-	-	-	-

**CITY OF WILDOMAR**  
**CAPITAL IMPROVEMENT PROGRAM PROJECT DETAIL SHEET**

FY 25/26 to FY 29/30

**PROJECT SUMMARY**

<b>PROJECT TITLE:</b>	Wildomar Trail Interchange Restriping	<b>CIP NO.:</b>	103	<b>DEPT:</b>	Public Works
<b>LOCATION:</b>	Wildomar Trail/I-15	<b>CATEGORY:</b>	Trans. (Roads)	<b>MANAGER:</b>	Jason Farag
<b>INITIATED:</b>	FY 24/25				

**PROJECT DESCRIPTION AND EXHIBIT**

To improve the flow of traffic on Wildomar Trail for vehicles driving east to the I-15, the City is working with Caltrans to request permission to restripe part of Wildomar Trail within Caltrans Right-of-Way to provide enough width for a dedicated right-turn lane onto the I-15 Southbound On-Ramp, to minimize delays to eastbound through traffic.



PROJECT PHASE/TASK	TOTAL 5-YEAR PROJECT				PROPOSED BUDGET		PROJECTED BUDGET		
					FY 25/26	FY 26/27	FY 27/28	FY 28/29	FY 29/30 & Future Years
Project Dev/Environ.	\$ -				\$ -	\$ -	\$ -	\$ -	\$ -
Design/PS&E	20,000				20,000	-	-	-	-
Right-of-Way	5,000				5,000	-	-	-	-
Construction	295,000				295,000	-	-	-	-
Const Admin/Inspect.	12,600				12,600	-	-	-	-
<b>Total Cost:</b>	<b>\$ 332,600</b>				<b>\$ 332,600</b>	<b>\$ -</b>	<b>\$ -</b>	<b>\$ -</b>	<b>\$ -</b>
<b>FUNDING SOURCES</b>									
201 - Measure A	\$ 82,600				\$ 82,600	\$ -	\$ -	\$ -	\$ -
120 - Measure AA	250,000				250,000	-	-	-	-
	-				-	-	-	-	-
	-				-	-	-	-	-
	-				-	-	-	-	-

**CITY OF WILDOMAR**  
**CAPITAL IMPROVEMENT PROGRAM PROJECT DETAIL SHEET**

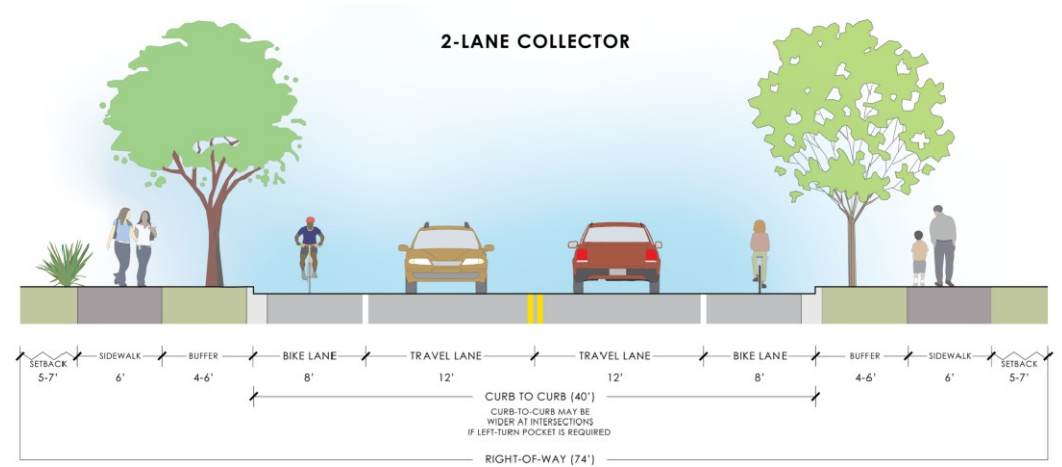
FY 25/26 to FY 29/30

**PROJECT SUMMARY**

<b>PROJECT TITLE:</b>	Engineering Standards and Guidelines	<b>CIP NO.:</b>	104	<b>DEPT:</b>	Public Works
<b>LOCATION:</b>	Citywide	<b>CATEGORY:</b>	Other	<b>MANAGER:</b>	Unassigned
<b>INITIATED:</b>	FY 24/25				

**PROJECT DESCRIPTION AND EXHIBIT**

Since incorporation, the City has been using the County of Riverside Transportation Department's Standards and Guidelines for Engineering Design. This project budgets funds to allow the City to begin transitioning to City-specific standards and guidelines. This will include new standard drawings to reflect the City's Circulation Plan/General Plan updates. This project will benefit both the Development Engineering and Capital Improvement Program divisions of the Public Works/Engineering Department.



PROJECT PHASE/TASK	TOTAL 5- YEAR PROJECT				PROPOSED BUDGET		PROJECTED BUDGET		
					FY 25/26	FY 26/27	FY 27/28	FY 28/29	FY 29/30 & Future Years
Project Dev/Environ.	\$ 150,000				\$ 50,000	\$ 100,000	\$ -	\$ -	\$ -
Design/PS&E	-				-	-	-	-	-
Right-of-Way	-				-	-	-	-	-
Construction	-				-	-	-	-	-
Const Admin/Inspect.	-				-	-	-	-	-
<b>Total Cost:</b>	<b>\$ 150,000</b>				<b>\$ 50,000</b>	<b>\$ 100,000</b>	<b>\$ -</b>	<b>\$ -</b>	<b>\$ -</b>
<b>FUNDING SOURCES</b>									
120 - Measure AA	\$ -				\$ -	\$ -	\$ -	\$ -	\$ -
201 - Measure A	150,000				50,000	100,000	-	-	-
	-				-	-	-	-	-
	-				-	-	-	-	-
	-				-	-	-	-	-

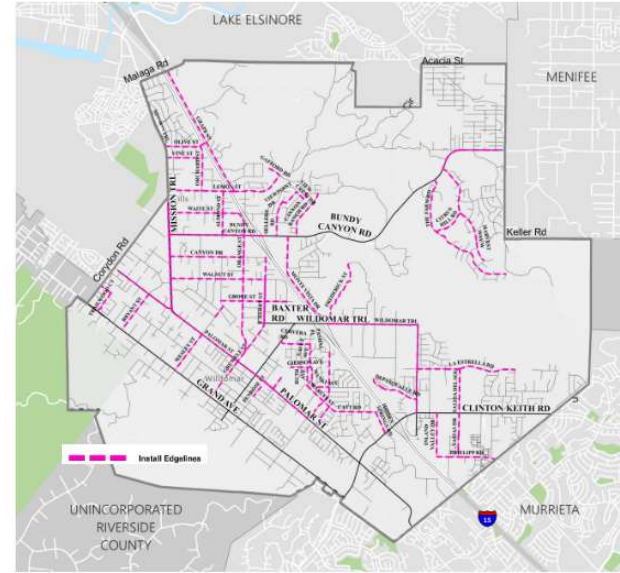
**CITY OF WILDOMAR**  
**CAPITAL IMPROVEMENT PROGRAM PROJECT DETAIL SHEET**  
FY 25/26 to FY 29/30

**PROJECT SUMMARY**

<b>PROJECT TITLE:</b>	<b>Install Edgelines (HSIP)</b>	<b>CIP NO.:</b>	105	<b>DEPT:</b>	Public Works
<b>LOCATION:</b>	Citywide	<b>CATEGORY:</b>	Trans. (Roads)	<b>MANAGER:</b>	Unassigned
<b>INITIATED:</b>	FY 25/26				

**PROJECT DESCRIPTION AND EXHIBIT**

This project will provide funding for striping/restriping edgelines throughout the City. The striping will be integrated into other Citywide projects such as the Annual Road Rehabilitation (CIP 058), Slurry Seal (CIP 058), and the Traffic Operations (CIP 111) projects. Funding for design and construction admin will be covered by funds from the other projects in which this project will be integrated.



PROJECT PHASE/TASK	TOTAL 5- YEAR PROJECT				PROPOSED BUDGET		PROJECTED BUDGET		
					FY 25/26	FY 26/27	FY 27/28	FY 28/29	FY 29/30 & Future Years
Project Dev/Environ.	\$ -				\$ -	\$ -	\$ -	\$ -	\$ -
Design/PS&E	-				-	-	-	-	-
Right-of-Way	-				-	-	-	-	-
Construction	348,920				348,920	-	-	-	-
Const Admin/Inspect.	-				-	-	-	-	-
<b>Total Cost:</b>	<b>\$ 348,920</b>				<b>\$ 348,920</b>	<b>\$ -</b>	<b>\$ -</b>	<b>\$ -</b>	<b>\$ -</b>
<b>FUNDING SOURCES</b>									
506 - HSIP	\$ 348,920				\$ 348,920	\$ -	\$ -	\$ -	\$ -
	-				-	-	-	-	-
	-				-	-	-	-	-
	-				-	-	-	-	-
	-				-	-	-	-	-

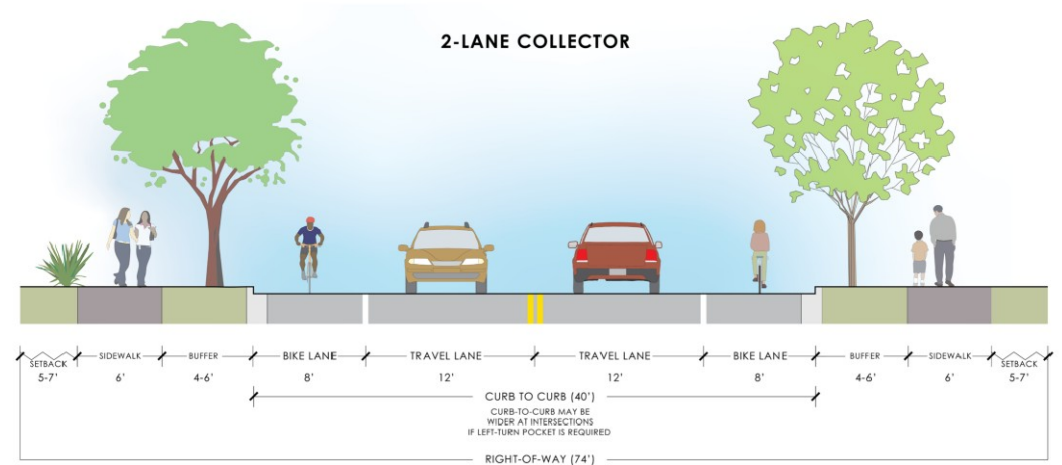
**CITY OF WILDOMAR**  
**CAPITAL IMPROVEMENT PROGRAM PROJECT DETAIL SHEET**  
FY 25/26 to FY 29/30

**PROJECT SUMMARY**

<b>PROJECT TITLE:</b>	<b>Geometric Alignment Studies</b>	<b>CIP NO.:</b>	106	<b>DEPT:</b>	Public Works
<b>LOCATION:</b>	Various Streets Citywide	<b>CATEGORY:</b>	Other	<b>MANAGER:</b>	Unassigned
<b>INITIATED:</b>	FY 25/26				

**PROJECT DESCRIPTION AND EXHIBIT**

Preliminary/conceptual studies for various roadways in the City that may require geometric or alignment studies to incorporate the latest Circulation Plan roadway cross-sections. This will help provide guidance both for developers building on these roads, and for the City in building or pursuing grant funds to build the roads. This may include roads such as Grand Ave., Mission Trail, Wildomar Trail, Monte Vista Dr., Corydon Rd., and others.



PROJECT PHASE/TASK	TOTAL 5-YEAR PROJECT	PROPOSED BUDGET			PROJECTED BUDGET			
		FY 25/26	FY 26/27		FY 27/28	FY 28/29	FY 29/30 & Future Years	
Project Dev/Environ.	\$ 150,000	\$ -	\$ 60,000		\$ 30,000	\$ 30,000	\$ 30,000	
Design/PS&E	-	-	-		-	-	-	
Right-of-Way	-	-	-		-	-	-	
Construction	-	-	-		-	-	-	
Const Admin/Inspect.	-	-	-		-	-	-	
<b>Total Cost:</b>	<b>\$ 150,000</b>	<b>\$ -</b>	<b>\$ 60,000</b>		<b>\$ 30,000</b>	<b>\$ 30,000</b>	<b>\$ 30,000</b>	
<b>FUNDING SOURCES</b>								
120 - Measure AA	\$ -	\$ -	\$ -		\$ -	\$ -	\$ -	
201 - Measure A	150,000	-	60,000		30,000	30,000	30,000	
	-	-	-		-	-	-	
	-	-	-		-	-	-	
	-	-	-		-	-	-	

**CITY OF WILDOMAR**  
**CAPITAL IMPROVEMENT PROGRAM PROJECT DETAIL SHEET**

FY 25/26 to FY 29/30

**PROJECT SUMMARY**

<b>PROJECT TITLE:</b>	<b>Sedco MDP Lines A &amp; B</b>	<b>CIP NO.:</b>	107	<b>DEPT:</b>	Public Works
<b>LOCATION:</b>	Sylvester Rd. and Elberta Rd.	<b>CATEGORY:</b>	Drainage	<b>MANAGER:</b>	Unassigned
<b>INITIATED:</b>	FY 25/26				

**PROJECT DESCRIPTION AND EXHIBIT**

This project is for the construction of Master Drainage Plan (MDP) Lines A and B. These are 1,485 LF and 1,190 LF underground storm drain lines on Sylvester Road and Elberta Road.



PROJECT PHASE/TASK	TOTAL 5-YEAR PROJECT	PROPOSED BUDGET			PROJECTED BUDGET			
		FY 25/26	FY 26/27		FY 27/28	FY 28/29	FY 29/30 & Future Years	
Project Dev/Environ.	\$ 50,000	\$ 25,000	\$ 25,000		\$ -	\$ -	\$ -	
Design/PS&E	240,000	125,000	115,000		-	-	-	
Right-of-Way	-	-	-		-	-	-	
Construction	1,000,000	-	-		1,000,000	-	-	
Const Admin/Inspect.	200,000	-	-		200,000	-	-	
<b>Total Cost:</b>	<b>\$ 1,490,000</b>	<b>\$ 150,000</b>	<b>\$ 140,000</b>		<b>\$ 1,200,000</b>	<b>\$ -</b>	<b>\$ -</b>	
<b>FUNDING SOURCES</b>								
451 - DIF Drainage	\$ 651,130	\$ 150,000	\$ 140,000		\$ 361,130	\$ -	\$ -	
502 - RCFC	838,870	-	-		838,870	-	-	
	-	-	-		-	-	-	
	-	-	-		-	-	-	
	-	-	-		-	-	-	

**CITY OF WILDOMAR**  
**CAPITAL IMPROVEMENT PROGRAM PROJECT DETAIL SHEET**

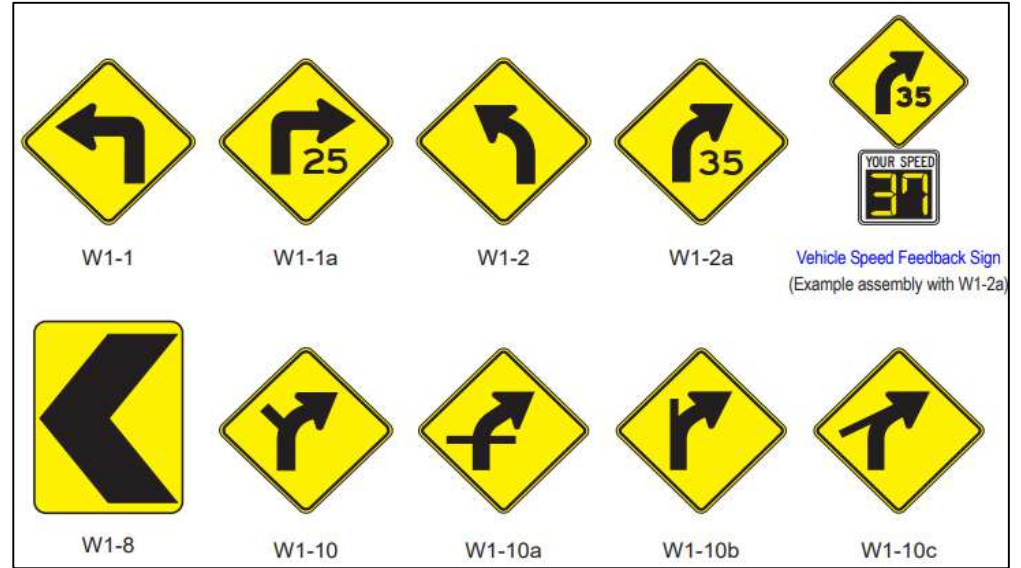
FY 25/26 to FY 29/30

**PROJECT SUMMARY**

<b>PROJECT TITLE:</b>	Traffic Maintenance and Operations	<b>CIP NO.:</b>	108	<b>DEPT:</b>	Public Works
<b>LOCATION:</b>	Citywide	<b>CATEGORY:</b>	Trans. (Maint.)	<b>MANAGER:</b>	Unassigned
<b>INITIATED:</b>	FY 25/26				

**PROJECT DESCRIPTION AND EXHIBIT**

This project budgets funds for the City's traffic maintenance and operations, including traffic signing and striping maintenance, traffic signal maintenance, traffic studies, speed surveys, and traffic related improvements. For general roadway and right-of-way maintenance, refer to CIP 109.



PROJECT PHASE/TASK	TOTAL 5-YEAR PROJECT				PROPOSED BUDGET		PROJECTED BUDGET		
					FY 25/26	FY 26/27	FY 27/28	FY 28/29	FY 29/30 & Future Years
Project Dev/Environ.	\$ -				\$ -	\$ -	\$ -	\$ -	\$ -
Design/PS&E	382,000				99,900	79,900	67,400	67,400	67,400
Right-of-Way	-				-	-	-	-	-
Construction	1,864,000				435,000	350,000	309,000	458,000	312,000
Const Admin/Inspect.	-				-	-	-	-	-
<b>Total Cost:</b>	<b>\$ 2,246,000</b>				<b>\$ 534,900</b>	<b>\$ 429,900</b>	<b>\$ 376,400</b>	<b>\$ 525,400</b>	<b>\$ 379,400</b>
<b>FUNDING SOURCES</b>									
100 - General Fund	\$ 156,000				\$ 31,200	\$ 31,200	\$ 31,200	\$ 31,200	\$ 31,200
120 - Measure AA	816,000				171,000	180,000	150,000	155,000	160,000
200 - Gas Tax	-				-	-	-	-	-
201 - Measure A	1,274,000				332,700	218,700	195,200	339,200	188,200
	-				-	-	-	-	-

**CITY OF WILDOMAR**  
**CAPITAL IMPROVEMENT PROGRAM PROJECT DETAIL SHEET**

FY 25/26 to FY 29/30

**PROJECT SUMMARY**

<b>PROJECT TITLE:</b>	Citywide Roadway Maintenance	<b>CIP NO.:</b>	109	<b>DEPT:</b>	Public Works
<b>LOCATION:</b>	Citywide	<b>CATEGORY:</b>	Trans. (Maint.)	<b>MANAGER:</b>	Unassigned
<b>INITIATED:</b>	FY 25/26				

**PROJECT DESCRIPTION AND EXHIBIT**

This project budgets funds for the City's annual routine roadway and right-of-way maintenance, including pothole repairs, tree trimming, weed removals, roadway/shoulder grading, drainage maintenance, etc... For traffic maintenance items, including traffic signing and striping, refer to CIP 108.



PROJECT PHASE/TASK	TOTAL 5-YEAR PROJECT	PROPOSED BUDGET			PROJECTED BUDGET				
					FY 25/26	FY 26/27	FY 27/28	FY 28/29	FY 29/30 & Future Years
Project Dev/Environ.	\$ -				\$ -	\$ -	\$ -	\$ -	\$ -
Design/PS&E	-				-	-	-	-	-
Right-of-Way	-				-	-	-	-	-
Construction	1,203,000				225,000	273,000	215,000	235,000	255,000
Const Admin/Inspect.	-				-	-	-	-	-
<b>Total Cost:</b>	<b>\$ 1,203,000</b>				<b>\$ 225,000</b>	<b>\$ 273,000</b>	<b>\$ 215,000</b>	<b>\$ 235,000</b>	<b>\$ 255,000</b>
<b>FUNDING SOURCES</b>									
100 - General Fund	\$ -				\$ -	\$ -	\$ -	\$ -	\$ -
120 - Measure AA	1,018,000				200,000	188,000	190,000	210,000	230,000
200 - Gas Tax	-				-	-	-	-	-
201 - Measure A	185,000				25,000	85,000	25,000	25,000	25,000
	-				-	-	-	-	-

# APPENDIX B

## FUTURE PROJECTS NOT YET BUDGETED OR SCHEDULED

(appendix continues on next page)

**Table 14 - Future DIF Projects (Streets)**

<b>Project</b>	<b>Segment</b>	<b>Estimated Cost</b>
<b>Clinton Keith Rd.</b>	Palomar St. to City Limits	\$ 4,966,405
<b>Bundy Canyon Rd.</b>	Orange St. to Monte Vista Dr.	\$ 1,456,852
<b>Bundy Canyon Rd.</b>	Monte Vista Dr. to Sunset Ave.	\$ 8,430,701
<b>Mission Trail</b>	Corydon Rd. to Palomar St.	\$ 3,262,755
<b>Palomar St.</b>	Mission Trail to Jefferson St.	\$ 4,673,693
<b>Wildomar Trail</b>	Palomar St. to Monte Vista Dr.	\$ 135,235
<b>Washington Ave.</b>	Palomar St. to Southern City Limits	\$ 1,477,484
<b>Bundy Canyon Rd.</b>	Mission Trail to Orange St.	\$ -
<b>Corydon St.</b>	Grand Ave. to Mission Trail	\$ 4,181,185
<b>Mission Trail</b>	Malaga Rd. to Corydon St.	\$ 2,409,701
<b>Clinton Keith Rd.</b>	Grand Ave. to Palomar St.	\$ 1,267,309
<b>Hidden Springs Rd.</b>	Clinton Keith Rd. to Stable Lanes Rd.	\$ 542,350
<b>Monte Vista Dr.</b>	Bundy Canyon Rd. to Wildomar Trail	\$ 5,613,768
<b>Wildomar Trail</b>	Monte Vista Dr. to Bayless Rd.	\$ 1,295,485
<b>Inland Valley Dr.</b>	La Estrella St. to Bunny Trail	\$ 3,800,089
<b>Bayless Rd.</b>	Wildomar Trail to La Estrella St.	\$ 3,574,876
<b>Inland Valley Dr.</b>	Bunny Trail to Palomar St.	\$ 3,183,563
<b>Prielipp Rd.</b>	Inland Valley Dr. to Eastern City Limits	\$ 1,537,678
<b>Cottonwood Canyon Rd.</b>	Bundy Canyon Rd. to Northern City Limits	\$ 6,041,672
<b>Grape St.</b>	Malaga Rd. to Lemon St.	\$ 2,439,592
<b>Gruwell St.</b>	Palomar St. to Grand Ave.	\$ 901,266
<b>La Estrella St.</b>	Crossroads St. to City Limits	\$ 1,509,498
<b>Lemon St.</b>	Mission Trail to Grape St.	\$ 2,006,036
<b>Wildomar Trail</b>	Palomar St. to Grand Ave.	\$ -
<b>La Estrella St.</b>	Inland Valley Dr. to Crossroads St.	\$ 966,105
<b>Salida del Sol</b>	La Estrella St. to Clinton Keith Rd.	\$ 1,030,260
<b>Wildomar Trail</b>	Bayless Rd. to Wildomar Trail	\$ 1,589,736
<b>Wildomar Trail</b>	Wildomar Trail to Brillante Dr.	\$ 636,051
<b>Wildomar Trail</b>	Brillante Dr. to Clinton Keith Rd.	\$ 1,254,938
<b>Lemon St.</b>	Grape St. to Gafford Rd.	\$ 1,206,800
<b>Lost Rd.</b>	Gafford Rd. to City Limits	\$ 4,970,987
<b>Palomar St.</b>	Corydon Rd. to Mission Trail	\$ 1,426,742
<b>Grand Ave.</b>	Corydon Rd. to Clinton Keith Rd.	\$ 5,907,521
<b>Orange St.</b>	Bundy Canyon Rd. to Gruwell St.	\$ 3,476,561
<b>Gruwell St.</b>	Orange St. to Palomar St.	\$ 522,264
<b>McVicar St.</b>	Palomar St. to Grand Ave.	\$ 684,709
<b>La Estrella St.</b>	Susan Dr. to Inland Valley Dr.	\$ 529,406
<b>Depasquale Rd.</b>	Bayless Rd. to Inland Valley Dr.	\$ 990,564
<b>Stable Lanes Rd.</b>	Clinton Keith Rd. to Hidden Springs Rd.	\$ 840,741

<b>Wyman Rd.</b>	Stable Lanes Rd./Hidden Springs Rd. to City Limits	\$ 2,844,697
<b>Susan Dr.</b>	Wildomar Trail to La Estrella St.	\$ 1,238,363
<b>Bunny Trail</b>	Inland Valley Dr. to Elizabeth Ln.	\$ 1,482,695
<b>Yamas Dr.</b>	Clinton Keith Rd. to Prielipp Rd.	\$ 1,112,021
<b>Elizabeth Ln.</b>	Clinton Keith Rd. to Prielipp Rd.	\$ 1,112,021
<b>Jana Lane</b>	Clinton Keith Rd. to Prielipp Rd.	\$ 1,297,358
<b>Total</b>		<b>\$ 99,827,733</b>

Table 15 - Future DIF Projects (Intersections)

<b>Location</b>	<b>Total DIF Cost Share</b>
<b>Bundy Canyon Rd. x Cottonwood Canyon Rd.</b>	\$ 121,652
<b>Bundy Canyon Rd. x Oak Circle Dr.</b>	\$ 94,539
<b>Bundy Canyon Rd. x Orange St.</b>	\$ 18,926
<b>Bundy Canyon Rd. x The Farm Rd.</b>	\$ -
<b>Clinton Keith Rd. x Arya Dr.</b>	\$ 94,539
<b>Clinton Keith Rd. x Elizabeth Ln.</b>	\$ 94,539
<b>Clinton Keith Rd. x Hidden Springs Rd.</b>	\$ -
<b>Clinton Keith Rd. x Inland Valley Dr.</b>	\$ 148,764
<b>Clinton Keith Rd. x Renaissance Plaza</b>	\$ 94,539
<b>Clinton Keith Rd. x Salida del Sol/Yamas Dr.</b>	\$ 226,931
<b>Clinton Keith Rd. x Stable Lanes Rd.</b>	\$ 208,004
<b>Grand Ave. x Corydon St.</b>	\$ 18,926
<b>Grand Ave. x Gruwell St.</b>	\$ 37,853
<b>Inland Valley Dr. x Prielipp Rd.</b>	\$ 27,113
<b>Inland Valley Dr. x Wyman Rd.</b>	\$ 92,078
<b>Palomar St. x Clinton Keith Rd.</b>	\$ 244,176
<b>Palomar St. x Gruwell St.</b>	\$ 37,853
<b>Palomar St. x Inland Valley/Washington</b>	\$ 251,568
<b>Palomar St. x Mission Trail</b>	\$ -
<b>Prielipp Rd. x Elizabeth Ln.</b>	\$ -
<b>Wildomar Trail x Bayless Rd.</b>	\$ -
<b>Total</b>	<b>\$ 1,812,000</b>

Table 16 - Future DIF Projects (Bridges)

Project	Total
<b>Gruwell St. @ Murrieta Creek/Wildomar Channel</b>	\$ 166,922
<b>Wildomar Trail (Central St.) @ Murrieta Creek/Wildomar Channel</b>	\$ 259,656
<b>Wildomar Creek Culvert Extension @ McVicar St.</b>	\$ 31,202
<b>Penrose St. Class I Connection @ Wildomar Channel</b>	\$ 333,844
<b>La Estrella Street Bridge</b>	\$ 6,360,937
<b>Total</b>	<b>\$ 7,152,561</b>

Table 17 - Future DIF Projects (Traffic Signal Improvements)

Location	Cross Street	Type	Improvement	DIF Cost Share
<b>Bundy Canyon</b>	Almond St.	New 4-way	Install new 4-way	\$ 392,000
<b>Bundy Canyon</b>	Harvest Way East	New 4-way	Install new 4-way	\$ -
<b>Bundy Canyon</b>	Harvest Way West	New 4-way	Install new 4-way	\$ -
<b>Bundy Canyon</b>	I-15 NB	Existing 4-way	Modify to Ultimate 4-way	\$ -
<b>Bundy Canyon</b>	I-15 SB	Existing 4-way	Modify to Ultimate 4-way	\$ -
<b>Bundy Canyon</b>	Mission Trail	Existing 4-way	Modify to Ultimate 4-way	\$ 294,000
<b>Bundy Canyon</b>	Monte Vista	Existing 3-way	Complete - Maintain Existing	\$ 262,000
<b>Bundy Canyon</b>	Oak Circle Rd.	New 3-way	Install new 3-way	\$ 262,000
<b>Bundy Canyon</b>	Orange	Existing 4-way	Modify to Ultimate 4-way	\$ 196,000
<b>Bundy Canyon</b>	Orchard St.	New 3-way	Install new 3-way	\$ 262,000
<b>Bundy Canyon</b>	Sellers	Existing 3-way	Complete - Maintain Existing	\$ 294,000
<b>Bundy Canyon</b>	Sunset	New 4-way	Install new 4-way	\$ 196,000
<b>Bundy Canyon</b>	The Farm	Existing 3-way	Modify to Ultimate 3-way	\$ 262,000
<b>Bundy Canyon</b>	W/o Tulip	New 3-way	Install new 3-way	\$ -
<b>Clinton Keith</b>	Elizabeth	New 4-way	Install new 4-way	\$ 392,000
<b>Clinton Keith</b>	Wildomar Trail (George)	Existing 4-way	Modify to Ultimate 4-way	\$ 196,000
<b>Clinton Keith</b>	Grand	Existing 3-way	Modify to Ultimate 3-way	\$ 131,000
<b>Clinton Keith</b>	Hidden Springs	Existing 4-way	Modify to Ultimate 4-way	\$ 98,000
<b>Clinton Keith</b>	Inland Valley	Existing 3-way	Modify to Ultimate 4-way	\$ 294,000
<b>Clinton Keith</b>	Palomar	Existing 4-way	Modify to Ultimate 4-way	\$ 392,000
<b>Clinton Keith</b>	Renaissance Plaza	Existing 4-way	Modify to Ultimate 4-way	\$ 196,000
<b>Clinton Keith</b>	Salida Del Sol/Yamas Dr.	New 4-way	Install new 4-way	\$ 392,000
<b>Clinton Keith</b>	Stable Lanes	New 4-way	Install new 4-way	\$ 392,000
<b>Clinton Keith</b>	Arya	Existing 4-way	Modify to Ultimate 4-way	\$ 196,000
<b>Clinton Keith</b>	Smith Ranch Road	Existing 4-way	Complete - Maintain Existing	\$ -
<b>Corydon</b>	Union	Existing 4-way	Modify to Ultimate 4-way	\$ 196,000
<b>Grand</b>	Corydon	Existing 4-way	Modify to Ultimate 4-way	\$ 294,000

<b>Grand</b>	Gruwell	New 4-way	Install new 4-way	\$ 392,000
<b>Grand</b>	Shiela	New Round-About	Install new Roundabout	\$ 486,000
<b>Inland Valley</b>	Hidden Springs	New 4-way	Install new 4-way	\$ -
<b>Inland Valley</b>	Prielipp	New 4-way	Install new 4-way	\$ 392,000
<b>Mission Trail</b>	Canyon	Existing 4-way	Modify to Ultimate 4-way	\$ 196,000
<b>Mission Trail</b>	Corydon	Existing 3-way	Modify to Ultimate 3-way	\$ 196,500
<b>Mission Trail</b>	Lemon	Existing 3-way	Modify to Ultimate 3-way	\$ 131,000
<b>Mission Trail</b>	Malaga	Existing 4-way	Modify to Ultimate 4-way	\$ 196,000
<b>Mission Trail</b>	Olive	Existing 3-way	Modify to Ultimate 3-way	\$ 262,000
<b>Palomar</b>	Corydon	Existing 4-way	Modify to Ultimate 4-way	\$ 196,000
<b>Palomar</b>	Gruwell	Existing 4-way	Modify to Ultimate 4-way	\$ 392,000
<b>Palomar</b>	Inland Valley	New 4-way	Install new 4-way	\$ 392,000
<b>Palomar</b>	McVicar	New 4-way	Install new 4-way	\$ 392,000
<b>Palomar</b>	Mission Trail	New 3-Way or New Roundabout	Install new 3-way or new Roundabout	\$ 364,500
<b>Prielipp</b>	Elizabeth	New 4-way	Install new 4-way	\$ 392,000
<b>Prielipp</b>	Yamas (Salida Del Sol)	New 3-way	Install new 3-way	\$ 262,000
<b>Wildomar Trail</b>	Bayless Rd.	New 3-way or Roundabout	Install new 3-way or new Roundabout	\$ 364,500
<b>Wildomar Trail</b>	I-15 NB	New 4-way	Install new 4-way	\$ -
<b>Wildomar Trail</b>	I-15 SB	New 4-way	Install new 4-way	\$ -
<b>Wildomar Trail</b>	La Estrella	New 4-way	Install new 4-way	\$ 392,000
<b>Wildomar Trail (Central)</b>	Grand	Existing 4-way	Modify to Ultimate 4-way	\$ 196,000
<b>Wildomar Trail (Central)</b>	Palomar	Existing 4-way	Modify to Ultimate 4-way	\$ 392,000
<b>Wildomar Trail (Central)</b>	Wild Stallion/Cervera	Existing 4-way	Modify to Ultimate 4-way	\$ 392,000
<b>Wildomar Trail (Central/Baxter)</b>	Baxter Rd.	New 3-way	Install new 3-way	\$ -
<b>Wildomar Trail (Central/Baxter)</b>	Monte Vista	New 3-way	Install new 3-way	\$ 262,000
<b>Total:</b>				<b>\$12,229,500</b>

Table 18 - Future DIF Projects (Drainage)

Facility	Total Cost
Subregion A4	\$ 4,092,000
Subregion M1	\$ 353,000
Subregion M2	\$ 5,586,000
Subregion M3	\$ 2,466,000
Subregion M4	\$ 1,940,000
Subregion M5	\$ 143,000
Subregion S1	\$ 2,591,000
Subregion S2	\$ 4,503,000
Subregion S3	\$ 12,481,000
Subregion S4	\$ 2,434,000
Subregion S5	\$ 19,588,000
Subregion S6	\$ 2,856,000
Subregion W1	\$ 5,109,000
Subregion W2	\$ 828,000
Subregion W3	\$ 785,000
Subregion W4	\$ 1,988,000
Subregion W5	\$ 6,544,000
Subregion W6	\$ 1,260,000
Subregion W7	\$ 4,886,000
Subregion W8	\$ 1,106,000
Murrieta Creek Channel Portion	\$ 8,853,000
Murrieta MDP Line J	\$ 10,819,000
Wildomar MDP Lateral A	\$ 14,362,000
Wildomar MDP Lateral C	\$ 17,842,000
Wildomar MDP Lateral C-2	\$ 1,176,000
Wildomar MDP Lateral C-3	\$ 795,000
Wildomar MDP Lateral C Basin	\$ 14,878,000
Wildomar MDP Line D	\$ 303,000
Sedco MDP Line F-2	\$ 782,000
<b>Total:</b>	<b>\$ 151,349,000</b>

Table 19 - Future DIF Projects (Trails)

Street or Location	Segment	Trail Type	Total Cost
<b>27 Acre Park</b>	Wildomar Trail to La Estrella	Multi-Use Trail	\$ 235,458
<b>Bryant St.</b>	Palomar St. to Grand Ave.	Multi-Use Trail	\$ 550,374
<b>Bundy Canyon Rd.</b>	Monte Vista Dr. to Eastern City Limits	Class I - Multi-Use Path	\$ 2,318,130
<b>Corydon St.</b>	Grand Ave. to Mission Trail	Multi-Use Trail	\$ 1,632,775
<b>Fredrick-O'Neal-Sauer</b>	Monte Vista Dr. Loop to Wildomar Trail	Multi-Use Trail	\$ 1,773,426
<b>Gafford Rd.</b>	Vista del Agua to Lost Rd./Lemon St.	Multi-Use Trail	\$ 911,174
<b>Geirson Ave.</b>	Prairie Rd. to Wildomar Channel (Lateral C, Stage 2)	Multi-Use Trail	\$ 84,642
<b>Grand Ave.</b>	Corydon St. to Clinton Keith Rd.	Multi-Use Trail	\$ 1,412,626
<b>Grape St.</b>	City Limits/Malaga Rd. to Lemon St.	Class I - Multi-Use Path	\$ 1,224,673
<b>Gruwell St.</b>	Orange St. to Palomar St.	Multi-Use Trail	\$ 166,131
<b>Gruwell St.</b>	Palomar St. to Grand Ave.	Class I - Multi-Use Path	\$ 393,645
<b>Gruwell St.</b>	Grand Ave. to Alameda del Monte	Multi-Use Trail	\$ 155,939
<b>Inland Valley Dr.</b>	La Estrella St. to Bayless Rd.	Multi-Use Trail	\$ 882,636
<b>La Estrella St.</b>	Crossroads St. to Eastern City Limits	Class I - Multi-Use Path	\$ 699,813
<b>La Estrella St.</b>	Susan Dr. to Inland Valley Dr.	Multi-Use Trail	\$ 428,068
<b>Lemon St.</b>	Mission Trail to Lost Rd./Gafford Rd.	Multi-Use Trail	\$ 1,467,663
<b>Lost Rd.</b>	Lemon St./Gafford Rd. to Northern City Limits	Multi-Use Trail	\$ 1,773,426
<b>McVicar St.</b>	Fortunado Way to Grand Ave.	Multi-Use Trail	\$ 264,995
<b>Mission Trail</b>	Lemon St. to Palomar St.	Multi-Use Trail	\$ 1,452,375
<b>Monte Vista Dr.</b>	Bundy Canyon Rd. to Wildomar Trail	Multi-Use Trail	\$ 1,386,126
<b>Murrieta Creek Regional Trail</b>	Wesley St. to Cole Canyon	Class I - Multi-Use Path	\$ 2,478,504
<b>Mustang Spirit Ln. EVMWD Access Road</b>	Prielipp Rd. to Mustang Spirit Ln.	Multi-Use Trail	\$ 172,361
<b>Oak Springs Ranch Trail</b>	Bunny Trail to Wildomar Trail	Multi-Use Trail	\$ 353,956
<b>Orange St.</b>	Bundy Canyon Rd. to Gruwell St.	Multi-Use Trail	\$ 1,428,933
<b>Palomar St.</b>	Corydon Rd. to Washington Ave.	Multi-Use Trail	\$ 4,657,792
<b>Penrose St. Bridge</b>	Darby St. to Front St.	Class I - Multi-Use Path	\$ 72,897

<b>Raciti Rd.</b>	Bundy Canyon Rd. to Vista del Agua	Multi-Use Trail	\$ 866,329
<b>RCFC Bundy Canyon Channel</b>	Valley Vista Cr. to Monte Vista Dr.	Multi-Use Trail	\$ 130,810
<b>RCFC Wildomar Channel - Lateral A (Torbett Family Trail)</b>	West of Wilson St. to Confluence with Wildomar Channel (main line)	Multi-Use Trail	\$ 615,576
<b>RCFC Wildomar Channel - Lateral B</b>	Grand Ave./Willow Bay Rd. to Confluence with Wildomar Channel (main line)	Class I - Multi-Use Path	\$ 247,850
<b>RCFC Wildomar Channel - Lateral C, Stage 2</b>	Gierson Ave./South Pasadena St. to Palomar St.	Multi-Use Trail	\$ 284,704
<b>RCFC Wildomar Channel - Stage 4</b>	Union St./Sundrops Ln. to Wesley St.	Class I - Multi-Use Path	\$ 145,794
<b>Regency Heritage Park</b>	Trailwood Ct. to Union St.	Class I - Multi-Use Path	\$ 80,187
<b>Starbuck Cr.</b>	Palomar St. to Murrieta Creek	Multi-Use Trail	\$ 336,339
<b>Starbuck Cr. Extension</b>	Starbuck Cr. to Southern City Limit	Multi-Use Trail	\$ 186,212
<b>Sunset Ave. Extension</b>	Bundy Canyon Rd. to La Estrella St.	Class I - Multi-Use Path	\$ 2,041,121
<b>Susan Dr.</b>	Wildomar Trail to La Estrella	Multi-Use Trail	\$ 542,220
<b>TR 23111-1 Drainage Channel</b>	Palomar St. to Grand Ave.	Multi-Use Trail	\$ 415,514
<b>Tulip Ln. Extension</b>	Bundy Canyon Rd. to Oneal Rd.	Multi-Use Trail	\$ 400,125
<b>Wesley St.</b>	Grand Ave. to Laguna Rd.	Multi-Use Trail	\$ 857,156
<b>Wildomar Trail</b>	Palomar St. to Clinton Keith Rd.	Multi-Use Trail	\$ 3,375,625
<b>Total:</b>			<b>\$ 38,904,103</b>

Table 20 - Future DIF Projects (Police and Fire Department)

<b>Project</b>	<b>Estimated Cost</b>
<b>Police Facilities (5,392 SF)</b>	\$ 3,046,252
<b>Existing and Future Fire Stations</b>	\$ 11,066,900
<b>Existing Fire Apparatus and Vehicles</b>	\$ 335,340
<b>Future Fire Apparatus and Vechiles</b>	\$ 849,000
<b>Total Facility/Equipment Cost</b>	<b>\$ 15,297,492</b>

**Table 21 - Future DIF Projects (Parks)**

Project	Estimated Cost
<b>Park Lands</b>	\$ 6,027,372
<b>Park Improvements</b>	\$ 60,273,720
<b>Total Cost</b>	<b>\$ 66,301,092</b>

**Table 22 - Future DIF Projects (Municipal Facilities)**

Project	Estimated Cost
<b>Community Center</b>	\$ 10,510,500
<b>City Hall</b>	\$ 10,580,000
<b>Animal Shelter</b>	\$ 1,555,383
<b>Corporation Yard</b>	\$ 2,390,000
<b>Total Cost</b>	<b>\$ 25,035,883</b>





"The City of Wildomar will be a safe and active community with responsible growth and quality infrastructure while keeping a hometown feel."

*City Council Adopted Vision Statement  
February 2017*

